



[Go to Product page](#)

Datasheet for ABIN5591072
anti-YFP antibody (N-Term)

1 Image

Overview

Quantity:	100 µg
Target:	YFP
Binding Specificity:	N-Term
Reactivity:	Jellyfish
Host:	Mouse
Clonality:	Monoclonal
Conjugate:	This YFP antibody is un-conjugated
Application:	Western Blotting (WB)

Product Details

Purpose:	Mouse monoclonal antibody raised against synthetic peptide of YFP.
Immunogen:	A synthetic peptide (conjugated with KLH) corresponding to N-terminus of jellyfish Aequorea victoria GFP.
Clone:	1218
Isotype:	IgG
Specificity:	This antibody recognizes native and denatured forms of GFP and its variants EGFP, YFP, EYFP, and CFP.
Cross-Reactivity:	Jellyfish

Target Details

Target: YFP

Alternative Name: YFP ([YFP Products](#))

Target Type: Synthetic

Application Details

Application Notes: Western Blot (1:1000)

The optimal working dilution should be determined by the end user.

Restrictions: For Research Use only

Handling

Format: Liquid

Concentration: 1 µg/µL

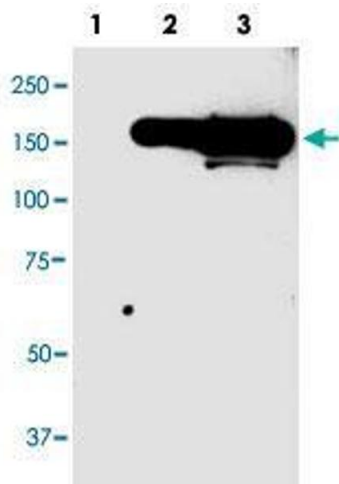
Buffer: In PBS, pH 7.4 (0.02 % sodium azide).

Preservative: Sodium azide

Precaution of Use: This product contains Sodium azide: a POISONOUS AND HAZARDOUS SUBSTANCE which should be handled by trained staff only.

Storage: 4 °C, -20 °C

Storage Comment: Store at 4°C as an undiluted liquid for several weeks. Dilute only prior to immediate use. For long term storage, aliquot and store at -20°C or below.
Aliquot to avoid repeated freezing and thawing.



Western Blotting

Image 1. Western blot analysis of YFP monoclonal antibody, clone 64a59 in 10 ug lysate from GFP fusion protein positive 293 cells. Lane 1 : Negative control. Lane 2 : 1 ug anti-GFP antibody. Lane 3 : 10 ug anti-GFP antibody.