

Datasheet for ABIN5591074

anti-MR1 antibody**1** Image[Go to Product page](#)

Overview

Quantity:	500 µg
Target:	MR1
Reactivity:	Chicken
Host:	Mouse
Clonality:	Monoclonal
Application:	Western Blotting (WB), Immunohistochemistry (IHC), Flow Cytometry (FACS), Immunoprecipitation (IP)

Product Details

Purpose:	Mouse monoclonal antibody raised against native YFV.
Immunogen:	Native purified from white blood cells from chicken plasma.
Clone:	F21-2
Isotype:	IgG1
Specificity:	A monomorphic epitope on avian MHC Class I molecules (Mr ~ 68 KDa).
Cross-Reactivity:	Chicken

Target Details

Target:	MR1
Alternative Name:	YFV (MR1 Products)
Background:	Full Gene Name: MHC class I antigen

Target Details

	Synonyms: Y-FA
Gene ID:	417065
Pathways:	Regulation of Leukocyte Mediated Immunity , Positive Regulation of Immune Effector Process , Production of Molecular Mediator of Immune Response , Cancer Immune Checkpoints

Application Details

Application Notes:	The optimal working dilution should be determined by the end user.
Restrictions:	For Research Use only

Handling

Format:	Liquid
Buffer:	In 100 mM BBS, pH 8.2
Storage:	4 °C
Storage Comment:	Store at 4°C.

Images

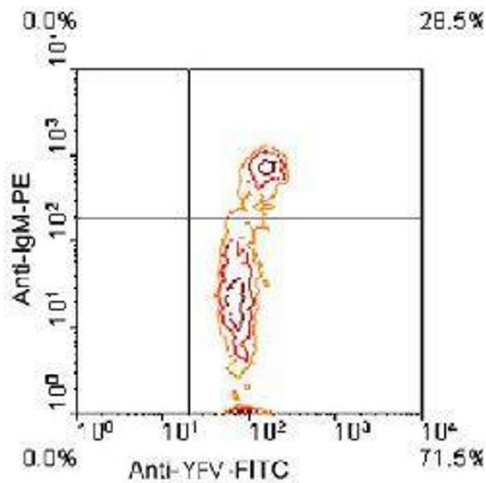


Image 1. Chicken peripheral blood mononuclear cells were double-stained with YFV monoclonal antibody, clone F21-2 (FITC) and mouse anti-chicken IgM-PE. Small lymphocytes were then gated and analyzed on a FACScan™ flow cytometer (BDIS, San Jose, CA).