



[Go to Product page](#)

Datasheet for ABIN5591080

anti-YIPF7 antibody

1 Image

Overview

Quantity:	100 µL
Target:	YIPF7
Reactivity:	Human
Host:	Rabbit
Clonality:	Polyclonal
Conjugate:	This YIPF7 antibody is un-conjugated
Application:	Immunohistochemistry (Paraffin-embedded Sections) (IHC (p))

Product Details

Purpose:	Rabbit polyclonal antibody raised against recombinant YIPF7.
Immunogen:	Recombinant protein corresponding to amino acids of human YIPF7.
Sequence:	LTVLNPMKPV DGSIMNETDL TGPILFCVAL GATLLLAG
Isotype:	IgG
Cross-Reactivity:	Human

Target Details

Target:	YIPF7
Alternative Name:	YIPF7 (YIPF7 Products)
Background:	Full Gene Name: Yip1 domain family, member 7 Synonyms: FLJ39576,FinGER9,MGC120164

Target Details

Gene ID: 285525

Application Details

Application Notes: Immunohistochemistry (1:50-1:200)
The optimal working dilution should be determined by the end user.

Restrictions: For Research Use only

Handling

Format: Liquid

Buffer: In PBS, pH 7.2 (40 % glycerol, 0.02 % sodium azide)

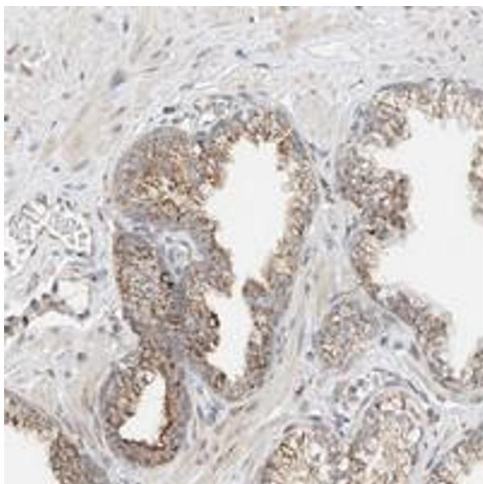
Preservative: Sodium azide

Precaution of Use: This product contains Sodium azide: a POISONOUS AND HAZARDOUS SUBSTANCE which should be handled by trained staff only.

Storage: 4 °C, -20 °C

Storage Comment: Store at 4°C. For long term storage store at -20°C.
Aliquot to avoid repeated freezing and thawing.

Images



Immunohistochemistry

Image 1. Immunohistochemical staining of human prostate with YIPF7 polyclonal antibody shows moderate cytoplasmic positivity with a granular pattern in glandular cells.