



[Go to Product page](#)

Datasheet for ABIN5591160  
**anti-ZC3H10 antibody (AA 136-412)**

1 Image

### Overview

Quantity:	100 µg
Target:	ZC3H10
Binding Specificity:	AA 136-412
Reactivity:	Human
Host:	Rabbit
Clonality:	Polyclonal
Conjugate:	This ZC3H10 antibody is un-conjugated
Application:	Western Blotting (WB), ELISA

### Product Details

Purpose:	Rabbit polyclonal antibody raised against partial recombinant ZC3H10.
Immunogen:	Recombinant protein corresponding to amino acids 136-412 of human ZC3H10.
Specificity:	This antibody is specific to ZC3H10.
Cross-Reactivity:	Human

### Target Details

Target:	ZC3H10
Alternative Name:	ZC3H10 ( <a href="#">ZC3H10 Products</a> )
Background:	Full Gene Name: zinc finger CCCH-type containing 10 Synonyms: FLJ14451,ZC3HDC10

## Target Details

Gene ID: 84872

## Application Details

Application Notes: Western Blot (1:1000-1:2000)  
ELISA (1:10000-1:80000)  
The optimal working dilution should be determined by the end user.

Restrictions: For Research Use only

## Handling

Format: Liquid

Buffer: In buffer containing 0.02 % sodium azide

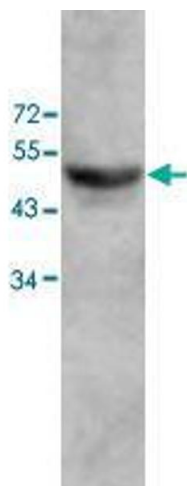
Preservative: Sodium azide

Precaution of Use: This product contains Sodium azide: a POISONOUS AND HAZARDOUS SUBSTANCE which should be handled by trained staff only.

Storage: 4 °C, -20 °C

Storage Comment: Store at 4°C for three months. For long term storage store at -20°C.  
Aliquot to avoid repeated freezing and thawing.

## Images



### Western Blotting

**Image 1.** Western blot analysis of human fetal colon lysate with ZC3H10 polyclonal antibody at 1 : 500 dilution.