



[Go to Product page](#)

Datasheet for ABIN5591172

## anti-ZC3H3 antibody

### 1 Image

#### Overview

Quantity:	100 µL
Target:	ZC3H3
Reactivity:	Human
Host:	Rabbit
Clonality:	Polyclonal
Conjugate:	This ZC3H3 antibody is un-conjugated
Application:	Immunohistochemistry (Paraffin-embedded Sections) (IHC (p))

#### Product Details

Purpose:	Rabbit polyclonal antibody raised against recombinant ZC3H3.
Immunogen:	Recombinant protein corresponding to amino acids of human ZC3H3.
Sequence:	GQLQPSRPTR ARGTCSVEDP LLVCQKEPGK PRMVKSVGSV GDSPREPRRT VSESVIAVKA SFPSSALPPR TGVALGRKLG SHSVASCAPQ LLGDRRVGAG H
Isotype:	IgG
Cross-Reactivity:	Human

#### Target Details

Target:	ZC3H3
Alternative Name:	ZC3H3 ( <a href="#">ZC3H3 Products</a> )
Background:	Full Gene Name: zinc finger CCCH-type containing 3

## Target Details

Synonyms: KIAA0150,ZC3HDC3

Gene ID: 23144

## Application Details

Application Notes: Immunohistochemistry (1:50-1:200)  
The optimal working dilution should be determined by the end user.

Restrictions: For Research Use only

## Handling

Format: Liquid

Buffer: In PBS, pH 7.2 (40 % glycerol, 0.02 % sodium azide)

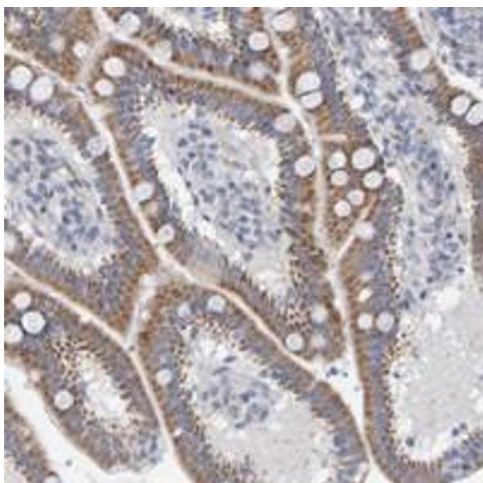
Preservative: Sodium azide

Precaution of Use: This product contains Sodium azide: a POISONOUS AND HAZARDOUS SUBSTANCE which should be handled by trained staff only.

Storage: 4 °C,-20 °C

Storage Comment: Store at 4°C. For long term storage store at -20°C.  
Aliquot to avoid repeated freezing and thawing.

## Images



### Immunohistochemistry

**Image 1.** Immunohistochemical staining of human duodenum with ZC3H3 polyclonal antibody shows moderate cytoplasmic positivity in glandular cells at 1:50-1:200 dilution.