



[Go to Product page](#)

Datasheet for ABIN5591175

anti-ZC3H6 antibody

1 Image

Overview

Quantity:	100 µL
Target:	ZC3H6
Reactivity:	Human
Host:	Rabbit
Clonality:	Polyclonal
Conjugate:	This ZC3H6 antibody is un-conjugated
Application:	Immunohistochemistry (Paraffin-embedded Sections) (IHC (p))

Product Details

Purpose:	Rabbit polyclonal antibody raised against recombinant ZC3H6.
Immunogen:	Recombinant protein corresponding to amino acids of human ZC3H6.
Sequence:	YHSPGFPGHV MKVPRENHCS PGSSYQQSPG EMQLNTNYES LQNPAEFYDN YYAQHSIHNF QPPNNSGDGM WHGEFAQQQP PVVQDSPNHG SGS
Isotype:	IgG
Cross-Reactivity:	Human

Target Details

Target:	ZC3H6
Alternative Name:	ZC3H6 (ZC3H6 Products)
Background:	Full Gene Name: zinc finger CCCH-type containing 6

Target Details

Synonyms: FLJ16526,FLJ41410,FLJ45877,KIAA2035,ZC3HDC6

Gene ID: 376940

Application Details

Application Notes: Immunohistochemistry (1:200-1:500)
The optimal working dilution should be determined by the end user.

Restrictions: For Research Use only

Handling

Format: Liquid

Buffer: In PBS, pH 7.2 (40 % glycerol, 0.02 % sodium azide)

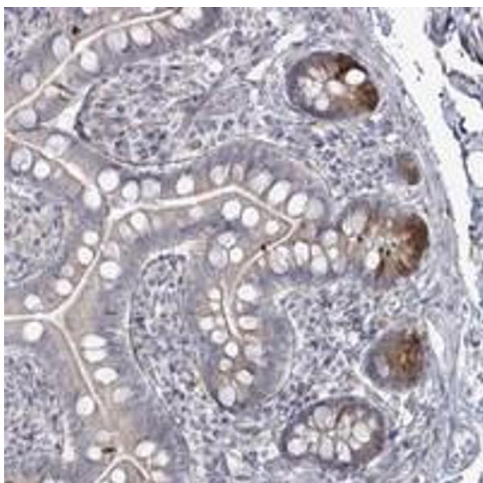
Preservative: Sodium azide

Precaution of Use: This product contains Sodium azide: a POISONOUS AND HAZARDOUS SUBSTANCE which should be handled by trained staff only.

Storage: 4 °C,-20 °C

Storage Comment: Store at 4°C. For long term storage store at -20°C.
Aliquot to avoid repeated freezing and thawing.

Images



Immunohistochemistry

Image 1. Immunohistochemical staining of human small intestine with ZC3H6 polyclonal antibody shows distinct cytoplasmic positivity in paneth cells at 1:200-1:500 dilution.