



[Go to Product page](#)

Datasheet for ABIN5591189
anti-ZCWPW2 antibody

2 Images

Overview

Quantity:	100 µL
Target:	ZCWPW2
Reactivity:	Human
Host:	Rabbit
Clonality:	Polyclonal
Conjugate:	This ZCWPW2 antibody is un-conjugated
Application:	Immunohistochemistry (Paraffin-embedded Sections) (IHC (p)), Western Blotting (WB)

Product Details

Purpose:	Rabbit polyclonal antibody raised against recombinant ZCWPW2.
Immunogen:	Recombinant protein corresponding to amino acids of human ZCWPW2.
Sequence:	TATPDESEEG HGEEINMG EK LSKCSPEAPA GSLFENHYEE DYLVIDGIKL KAGECIEDIT NKFKEIDALM SEF
Isotype:	IgG
Cross-Reactivity:	Human

Target Details

Target:	ZCWPW2
Alternative Name:	ZCWPW2 (ZCWPW2 Products)
Background:	Full Gene Name: zinc finger, CW type with PWWP domain 2

Target Details

Synonyms: ZCW2

Gene ID: 152098

Application Details

Application Notes: Immunohistochemistry (1:500-1:1000)
Western Blot (1:250-1:500)
The optimal working dilution should be determined by the end user.

Restrictions: For Research Use only

Handling

Format: Liquid

Buffer: In PBS, pH 7.2 (40 % glycerol, 0.02 % sodium azide)

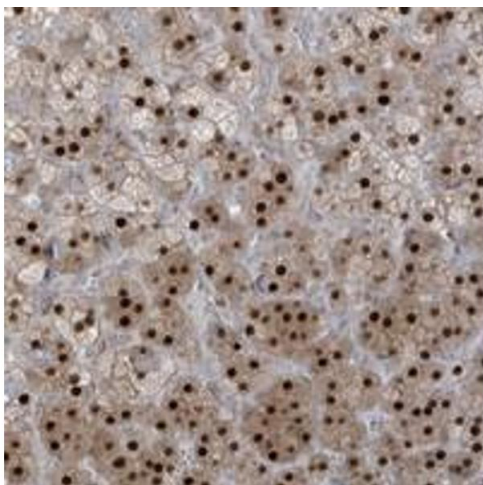
Preservative: Sodium azide

Precaution of Use: This product contains Sodium azide: a POISONOUS AND HAZARDOUS SUBSTANCE which should be handled by trained staff only.

Storage: 4 °C,-20 °C

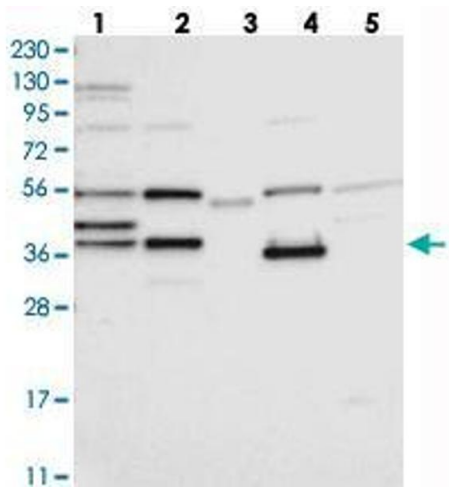
Storage Comment: Store at 4°C. For long term storage store at -20°C.
Aliquot to avoid repeated freezing and thawing.

Images



Immunohistochemistry

Image 1. Immunohistochemical staining of human adrenal gland with ZCWPW2 polyclonal antibody shows strong nuclear positivity in cortical cells.



Western Blotting

Image 2. Western blot analysis of Lane 1: RT-4, Lane 2: U-251 MG, Lane 3: Human Plasma, Lane 4: Liver, Lane 5: Tonsil with ZCWPW2 polyclonal antibody .