



Datasheet for ABIN5591295  
**anti-ZNF143 antibody**



[Go to Product page](#)

1 Image

Overview

Quantity:	100 µL
Target:	ZNF143
Reactivity:	Human
Host:	Rabbit
Clonality:	Polyclonal
Conjugate:	This ZNF143 antibody is un-conjugated
Application:	Immunohistochemistry (Paraffin-embedded Sections) (IHC (p))

Product Details

Purpose:	Rabbit polyclonal antibody raised against partial recombinant human ZNF143.
Immunogen:	Recombinant protein corresponding to human ZNF143.
Sequence:	TQSGLSQQVT LISQDGTQHV NISQADMQAI GNTITMVTQD GTPITVPAHD AVISSAGTHS VAMVTAEGTE GQQVAIVAQD LAAFHTASSE MGHQQHSHHL VTTETRPLTL VATSNGTQIA VQLGEPQPSLE EAIRIASRIQ QGET
Isotype:	IgG
Cross-Reactivity:	Human

Target Details

Target:	ZNF143
Alternative Name:	ZNF143 ( <a href="#">ZNF143 Products</a> )

## Target Details

Background: Full Gene Name: zinc finger protein 143  
Synonyms: SBF,STAF, pH Z-1

Gene ID: 7702

## Application Details

Application Notes: Immunohistochemistry (Formalin/PFA-fixed paraffin-embedded sections) (1:20-1:50)  
The optimal working dilution should be determined by the end user.

Restrictions: For Research Use only

## Handling

Format: Liquid

Buffer: In PBS, pH 7.2 (40 % glycerol, 0.02 % sodium azide).

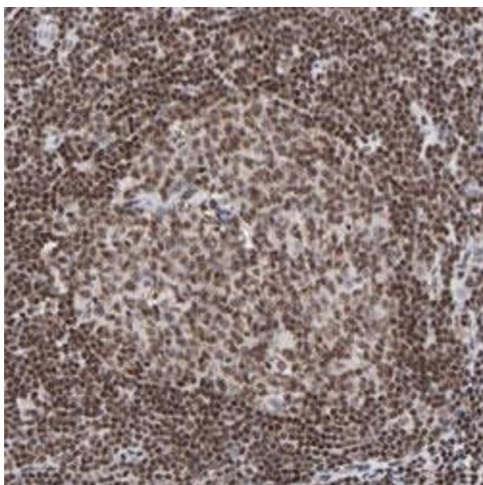
Preservative: Sodium azide

Precaution of Use: This product contains Sodium azide: a POISONOUS AND HAZARDOUS SUBSTANCE which should be handled by trained staff only.

Storage: 4 °C,-20 °C

Storage Comment: Store at 4°C. For long term storage store at -20°C.  
Aliquot to avoid repeated freezing and thawing.

## Images



### Immunohistochemistry

**Image 1.** Immunohistochemical staining (Formalin-fixed paraffin-embedded sections) of human lymph node with ZNF143 polyclonal antibody shows moderate nuclear positivity in reaction center cells and lymphoid cells outside reaction center at 1:20-1:50 dilution.