



[Go to Product page](#)

Datasheet for ABIN5591427

## anti-ZNF678 antibody

### 1 Image

#### Overview

Quantity:	100 µL
Target:	ZNF678
Reactivity:	Human
Host:	Rabbit
Clonality:	Polyclonal
Conjugate:	This ZNF678 antibody is un-conjugated
Application:	Immunohistochemistry (Paraffin-embedded Sections) (IHC (p))

#### Product Details

Purpose:	Rabbit polyclonal antibody raised against recombinant ZNF678.
Immunogen:	Recombinant protein corresponding to amino acids of human ZNF678.
Sequence:	SLCIGVCAFE GANTSTSFYK LVYTAILSYS IQDLLPEQDM KDLCQKVTLT RHRSWGLDNL HLVKDWRTVN EGKGQKEY
Isotype:	IgG
Cross-Reactivity:	Human

#### Target Details

Target:	ZNF678
Alternative Name:	ZNF678 ( <a href="#">ZNF678 Products</a> )
Background:	Full Gene Name: zinc finger protein 678

## Target Details

---

Synonyms: MGC42493

Gene ID: 339500

## Application Details

---

Application Notes: Immunohistochemistry (1:10-1:20)  
The optimal working dilution should be determined by the end user.

Restrictions: For Research Use only

## Handling

---

Format: Liquid

Buffer: In PBS, pH 7.2, (40 % glycerol, 0.02 % sodium azide)

Preservative: Sodium azide

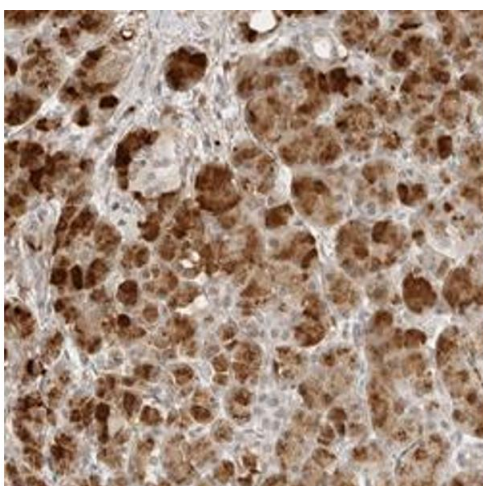
Precaution of Use: This product contains Sodium azide: a POISONOUS AND HAZARDOUS SUBSTANCE which should be handled by trained staff only.

Storage: 4 °C, -20 °C

Storage Comment: Store at 4°C. For long term storage store at -20°C.  
Aliquot to avoid repeated freezing and thawing.

## Images

---



### Immunohistochemistry

**Image 1.** Immunohistochemical staining of human pancreas with ZNF678 polyclonal antibody shows strong cytoplasmic positivity in exocrine cells.