



Datasheet for ABIN5591485
anti-ZSWIM4 antibody



[Go to Product page](#)

1 Image

Overview

| | |
|--------------|---|
| Quantity: | 100 µL |
| Target: | ZSWIM4 |
| Reactivity: | Human |
| Host: | Rabbit |
| Clonality: | Polyclonal |
| Conjugate: | This ZSWIM4 antibody is un-conjugated |
| Application: | Immunohistochemistry (Paraffin-embedded Sections) (IHC (p)) |

Product Details

| | |
|-------------------|---|
| Purpose: | Rabbit polyclonal antibody raised against recombinant ZSWIM4. |
| Immunogen: | Recombinant protein corresponding to amino acids of human ZSWIM4. |
| Sequence: | PLDPIGCLCR ALLEACRLEE ETLTLYPDSG PEKRVAYQH VPVPGSPGES YLVL |
| Isotype: | IgG |
| Cross-Reactivity: | Human |

Target Details

| | |
|-------------------|---|
| Target: | ZSWIM4 |
| Alternative Name: | ZSWIM4 (ZSWIM4 Products) |
| Background: | Full Gene Name: zinc finger, SWIM-type containing 4 |
| Gene ID: | 65249 |

Application Details

Application Notes: Immunohistochemistry (1:50-1:200)
The optimal working dilution should be determined by the end user.

Restrictions: For Research Use only

Handling

Format: Liquid

Buffer: In PBS, pH 7.2 (40 % glycerol, 0.02 % sodium azide)

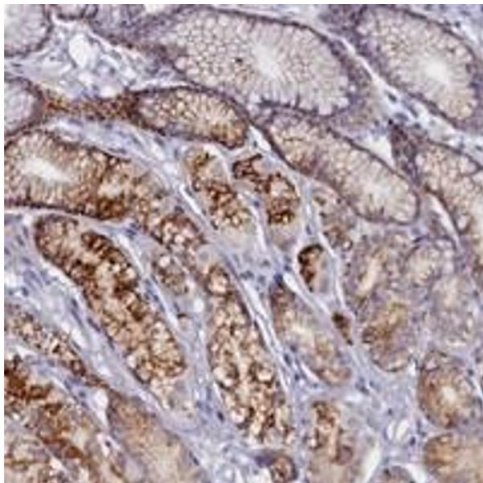
Preservative: Sodium azide

Precaution of Use: This product contains Sodium azide: a POISONOUS AND HAZARDOUS SUBSTANCE which should be handled by trained staff only.

Storage: 4 °C,-20 °C

Storage Comment: Store at 4°C. For long term storage store at -20°C.
Aliquot to avoid repeated freezing and thawing.

Images



Immunohistochemistry

Image 1. Immunohistochemical staining of human stomach with ZSWIM4 polyclonal antibody shows granular cytoplasmic positivity in glandular cells at 1:50-1:200 dilution.