



[Go to Product page](#)

Datasheet for ABIN5591486

anti-ZSWIM5 antibody

2 Images

Overview

Quantity:	100 µL
Target:	ZSWIM5
Reactivity:	Human
Host:	Rabbit
Clonality:	Polyclonal
Conjugate:	This ZSWIM5 antibody is un-conjugated
Application:	Western Blotting (WB), Immunohistochemistry (Paraffin-embedded Sections) (IHC (p))

Product Details

Purpose:	Rabbit polyclonal antibody raised against recombinant ZSWIM5.
Immunogen:	Recombinant protein corresponding to amino acids of human ZSWIM5.
Sequence:	QLEIYKHQKK ELLQRGTTTI TNLEGWVGHP LDPIDCLFLT LTEACRLNDD GYLEMSDMNE SRPPVYQHVP VAAGSPNSSE SYLSLALEVA LMG
Isotype:	IgG
Cross-Reactivity:	Human

Target Details

Target:	ZSWIM5
Alternative Name:	ZSWIM5 (ZSWIM5 Products)
Background:	Full Gene Name: zinc finger, SWIM-type containing 5

Target Details

Synonyms: KIAA1511

Gene ID: 57643

Application Details

Application Notes: Immunohistochemistry (1:500-1:1000)
Western Blot (1:250-1:500)
The optimal working dilution should be determined by the end user.

Restrictions: For Research Use only

Handling

Format: Liquid

Buffer: In PBS, pH 7.2 (40 % glycerol, 0.02 % sodium azide)

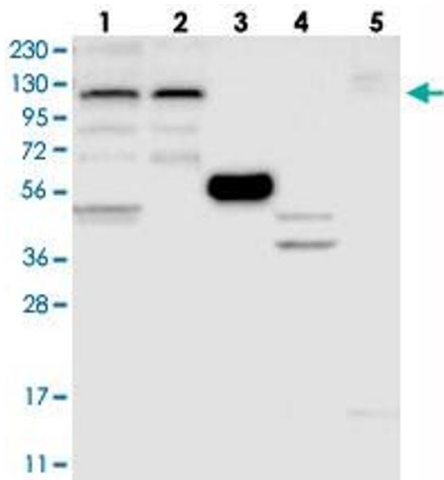
Preservative: Sodium azide

Precaution of Use: This product contains Sodium azide: a POISONOUS AND HAZARDOUS SUBSTANCE which should be handled by trained staff only.

Storage: 4 °C,-20 °C

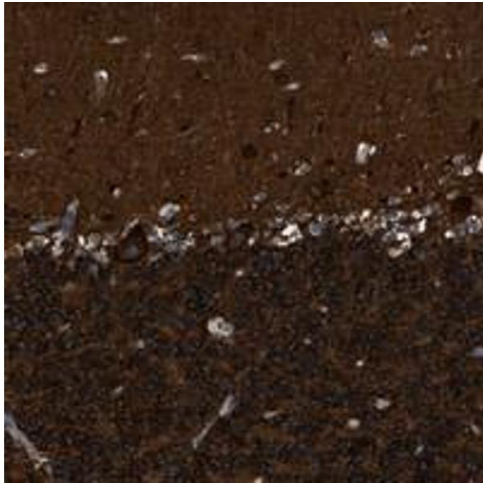
Storage Comment: Store at 4°C. For long term storage store at -20°C.
Aliquot to avoid repeated freezing and thawing.

Images



Western Blotting

Image 1. Western blot analysis of Lane 1: RT-4, Lane 2: U-251 MG, Lane 3: Human Plasma, Lane 4: Liver, Lane 5: Tonsil with ZSWIM5 polyclonal antibody .



Immunohistochemistry

Image 2. Immunohistochemical staining of human cerebellum with ZSWIM5 polyclonal antibody shows strong cytoplasmic positivity in cerebellar tissue.