



[Go to Product page](#)

Datasheet for ABIN5591493

anti-ZZEF1 antibody

1 Image

Overview

Quantity:	100 µL
Target:	ZZEF1
Reactivity:	Human
Host:	Rabbit
Clonality:	Polyclonal
Conjugate:	This ZZEF1 antibody is un-conjugated
Application:	Immunohistochemistry (Paraffin-embedded Sections) (IHC (p))

Product Details

Purpose:	Rabbit polyclonal antibody raised against recombinant ZZEF1.
Immunogen:	Recombinant protein corresponding to amino acids of human ZZEF1.
Sequence:	DYFFLEVQKR FDGDELTDE RIRSLAQRWQ PSKSLRLEEQ SAKAVDMDI ILPCLSRPAR CDQATAESNP VTQKLI
Isotype:	IgG
Cross-Reactivity:	Human

Target Details

Target:	ZZEF1
Alternative Name:	ZZEF1 (ZZEF1 Products)
Background:	Full Gene Name: zinc finger, ZZ-type with EF-hand domain 1

Target Details

Synonyms: FLJ10821,FLJ23789,FLJ45574,KIAA0399,MGC166929,ZZZ4

Gene ID: 23140

Application Details

Application Notes: Immunohistochemistry (1:200-1:500)
The optimal working dilution should be determined by the end user.

Restrictions: For Research Use only

Handling

Format: Liquid

Buffer: In PBS, pH 7.2 (40 % glycerol, 0.02 % sodium azide)

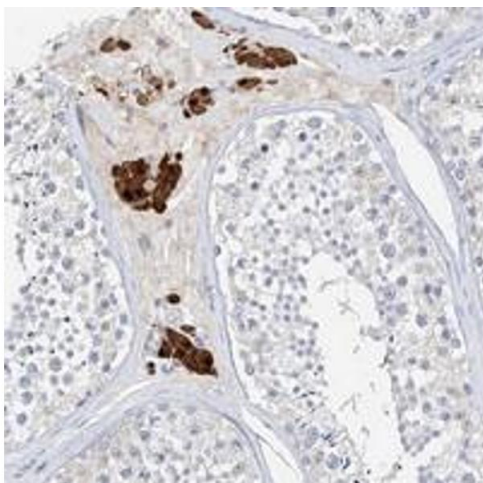
Preservative: Sodium azide

Precaution of Use: This product contains Sodium azide: a POISONOUS AND HAZARDOUS SUBSTANCE which should be handled by trained staff only.

Storage: 4 °C,-20 °C

Storage Comment: Store at 4°C. For long term storage store at -20°C.
Aliquot to avoid repeated freezing and thawing.

Images



Immunohistochemistry

Image 1. Immunohistochemical staining of human testis with ZZE1 polyclonal antibody shows strong cytoplasmic and nuclear positivity in cells of seminiferous ducts.