

Datasheet for ABIN5596661
anti-AKT1 antibody (Internal Region) (APC)



[Go to Product page](#)

3 Images

Overview

Quantity:	50 µg
Target:	AKT1
Binding Specificity:	Internal Region
Reactivity:	Human, Mouse, Rat
Host:	Mouse
Clonality:	Monoclonal
Conjugate:	This AKT1 antibody is conjugated to APC
Application:	Western Blotting (WB), ELISA, Immunohistochemistry (IHC), Flow Cytometry (FACS), Dot Blot (DB), Fluorescence Microscopy (FM)

Product Details

Purpose:	AKT1 APC Antibody
Immunogen:	Immunogen: Anti-AKT1 Antibody was produced in mice by repeated immunizations with a synthetic peptide corresponding to internal residues of human AKT1 protein followed by monoclonal development. Immunogen Type: Conjugated Peptide
Clone:	14E5-A2-B2-H9
Isotype:	IgG2a kappa
Cross-Reactivity (Details):	Anti-AKT1 antibody is directed against human AKT1. The antibody detects both unphosphorylated and phosphorylated forms of the protein.
Characteristics:	Synonyms: mouse anti-AKT1 antibody APC conjugation, allophycocyanin conjugated mouse

Product Details

anti-AKT-1 antibody, AKT-1, PKB antibody, PKB gamma antibody, PKBGAMMA antibody, PRKBG antibody, Protein kinase Akt 1 antibody, Protein kinase B gamma antibody, RAC-gamma serine/threonine-protein kinase, RAC-PK-gamma

Labeling Ratio: 1-2

Target Details

Target: AKT1

Alternative Name: AKT1 ([AKT1 Products](#))

Background: AKT is a component of the PI-3 kinase pathway and is activated by phosphorylation at Ser 473 and Thr 308. AKT is a cytoplasmic protein also known as AKT1, Protein Kinase B (PKB) and rac (related to A and C kinases). AKT is a key regulator of many signal transduction pathways. AKT Exhibits tight control over cell proliferation and cell viability. Overexpression or inappropriate activation of AKT is noted in many types of cancer. AKT mediates many of the downstream events of PI 3-kinase (a lipid kinase activated by growth factors, cytokines and insulin). PI 3-kinase recruits AKT to the membrane, where it is activated by PDK1 phosphorylation. Once phosphorylated, AKT dissociates from the membrane and phosphorylates targets in the cytoplasm and the cell nucleus. AKT has two main roles: (i) inhibition of apoptosis, (ii) promotion of proliferation. Anti-AKT1 (MOUSE) APC conjugated Monoclonal Antibody is ideal for investigators involved in Cell Signaling, Cancer, Neuroscience, Signal Transduction research.

Gene ID: 207

NCBI Accession: [NP_001014431](#)

UniProt: [P31749](#)

Pathways: [PI3K-Akt Signaling](#), [RTK Signaling](#), [TCR Signaling](#), [AMPK Signaling](#), [Interferon-gamma Pathway](#), [TLR Signaling](#), [Fc-epsilon Receptor Signaling Pathway](#), [EGFR Signaling Pathway](#), [Neurotrophin Signaling Pathway](#), [Response to Water Deprivation](#), [Regulation of Actin Filament Polymerization](#), [Carbohydrate Homeostasis](#), [Glycosaminoglycan Metabolic Process](#), [Cellular Glucan Metabolic Process](#), [Regulation of Muscle Cell Differentiation](#), [Cell-Cell Junction Organization](#), [Regulation of Cell Size](#), [Skeletal Muscle Fiber Development](#), [Regulation of Carbohydrate Metabolic Process](#), [Hepatitis C](#), [Protein targeting to Nucleus](#), [CXCR4-mediated Signaling Events](#), [Signaling Events mediated by VEGFR1 and VEGFR2](#), [Negative Regulation of intrinsic apoptotic Signaling](#), [Thromboxane A2 Receptor Signaling](#), [Signaling of Hepatocyte Growth Factor Receptor](#), [Positive Regulation of fat Cell Differentiation](#), [VEGFR1 Specific Signals](#), [VEGF Signaling](#), [Warburg Effect](#)

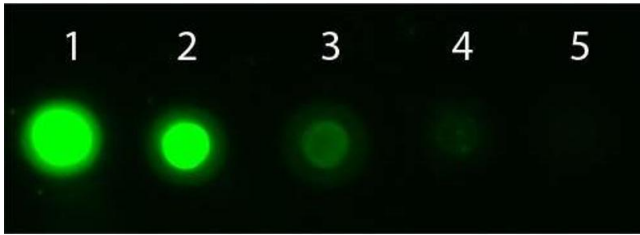
Application Details

Application Notes:	Flow Cytometry Dilution: 1.0 µg/mL Immunohistochemistry Dilution: User Optimized Application Note: Anti-AKT1 APC Antibody is tested for Flow Cytometry. This antibody is suitable for ELISA, immunohistochemistry, and western blotting. Expect a band approximately 56 kDa in size corresponding to AKT1 protein by western blotting in the appropriate cell lysate or extract. This monoclonal antibody reacts with human AKT. Specific conditions for reactivity should be optimized by the end user. For immunohistochemistry we recommend the use of fresh frozen tissues. Attempts at staining paraffin-embedded formalin fixed tissues were negative. No pre-treatment of sample is required. Western Blot Dilution: User Optimized ELISA Dilution: User Optimized IF Microscopy Dilution: User Optimized
--------------------	---

Restrictions:	For Research Use only
---------------	-----------------------

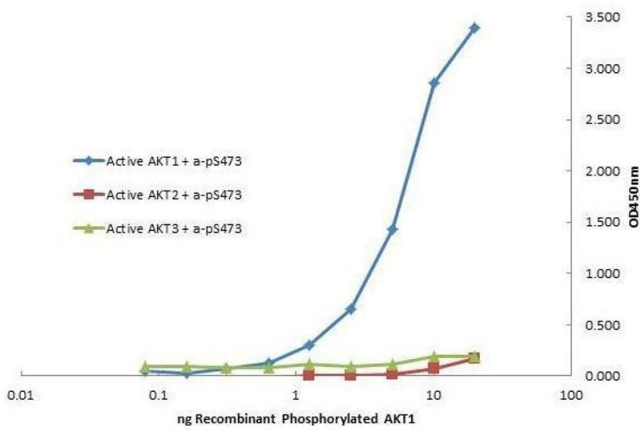
Handling

Format:	Lyophilized
Reconstitution:	Reconstitution Volume: 50µL Reconstitution Buffer: Restore with deionized water (or equivalent)
Concentration:	1.0 mg/mL
Buffer:	Buffer: 0.02 M Potassium Phosphate, 0.5 M Sodium Chloride, pH 7.2 Stabilizer: 10 mg/mL Bovine Serum Albumin (BSA) - Immunoglobulin and Protease free Preservative: None
Preservative:	Without preservative
Storage:	4 °C,-20 °C
Storage Comment:	Store vial at 4° C prior to restoration. Restore with deionized water (or equivalent). This product is stable for several weeks at 4° C as an undiluted liquid. Dilute only prior to immediate use. Centrifuge product if not completely clear after standing at room temperature. For extended storage, aliquot contents and freeze at -20° C or below. Avoid cycles of freezing and thawing. Store reagent in the dark. Use subdued lighting during handling and incubation of cells prior to analysis.
Expiry Date:	12 months



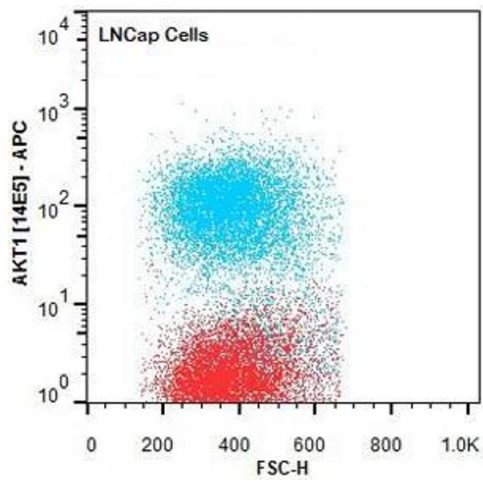
Dot Blot

Image 1. Dot Blot of AKT1 Allophycocyanin Conjugated Monoclonal Antibody. Antigen: AKT1 non-phosphorylated. Load: Lane 1 - 50 ng Lane 2 - 16.67 ng Lane 3 - 5.56 ng Lane 4 - 1.85 ng Lane 5 - 0.62 ng. Primary antibody: none. Secondary antibody: AKT1 Allophycocyanin Conjugated Monoclonal Antibody at 1:1,000 in ABIN925618 for 60 min at RT. Block: ABIN925618 for 60 min at RT.



ELISA

Image 2. Plate was coated with monoclonal anti AKT1 antibody (capture antibody) followed by incubation with recombinant AKT1, AKT2, AKT3 proteins. Binding was detected with biotinylated monoclonal anti AKT pS473. The signal shows specificity of the monoclonal anti-AKT1 antibody to recombinant isoform AKT1 protein and not the isoform 2 and 3.



Flow Cytometry

Image 3. Flow Cytometry of Mouse anti-AKT1 antibody. Cells: LNCap Cells. Stimulation: none. Primary antibody: Allophycocyanin AKT1 antibody at 1.0 µg/mL for 20 min at 4°C.