

Datasheet for ABIN5596685  
**anti-Aldolase antibody (HRP)**[Go to Product page](#)

## 3 Images

## Overview

Quantity:	100 µg
Target:	Aldolase (ALD)
Reactivity:	Rabbit
Host:	Goat
Clonality:	Polyclonal
Conjugate:	This Aldolase antibody is conjugated to HRP
Application:	Western Blotting (WB), ELISA

## Product Details

Immunogen:	Aldolase [Rabbit Muscle] Immunogenotype:Native
Isotype:	IgG
Characteristics:	Concentration Definition: by UV absorbance at 280 nm

## Target Details

Target:	Aldolase (ALD)
Alternative Name:	Aldolase ( <a href="#">ALD Products</a> )
Gene ID:	100009055
UniProt:	<a href="#">P00883</a>

## Application Details

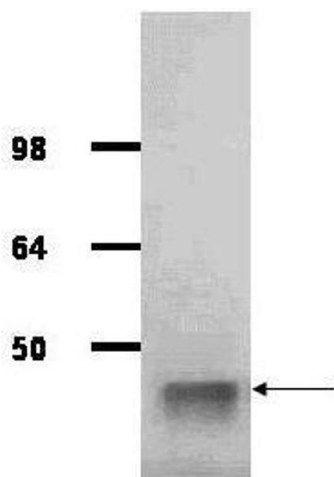
Application Notes:	<p>This product has been assayed against 1.0 µg of Aldolase [Rabbit Muscle] in a standard capture ELISA using ABTS (2,2'-azino-bis-[3-ethylbenthiazoline-6-sulfonic acid]) as a substrate for 30 minutes at room temperature. A working dilution of 1:1,000 to 1:2,000 of the reconstitution concentration is suggested for this product.</p> <p>ELISA Dilution: 1:5,000 - 1:20,000 Immunoprecipitation Dilution: 1:100</p> <p>Western Blot Dilution: 1:500 - 1:5,000</p>
--------------------	---------------------------------------------------------------------------------------------------------------------------------------------------------------------------------------------------------------------------------------------------------------------------------------------------------------------------------------------------------------------------------------------------------------------------------------------------------------------------

Restrictions:	For Research Use only
---------------	-----------------------

## Handling

Format:	Lyophilized
Reconstitution:	Restore with deionized water (or equivalent)
Concentration:	10.0 mg/mL
Buffer:	0.02 M Potassium Phosphate, 0.15 M Sodium Chloride, pH 7.2
Preservative:	Gentamicin sulfate
Handling Advice:	Do NOT add Sodium Azide!
Storage:	4 °C

## Images



### Western Blotting

**Image 1.** IgG purified antibody to rabbit muscle aldolase (100-1141, 200-1141 and 200-1341) was used at a 1:1000 dilution to detect human aldolase by western blot. A whole cell lysate prepared from human derived A293 cells was loaded on a 4-12% tris glycine gradient gel for SDS-PAGE. The gel was transferred to nitro-cellulose using standard techniques. Antibody reaction with the membrane occurred overnight at 4° C in TTBS supplemented with 2% non-fat dry milk. Color was allowed to develop using SuperSignal West Pico Chemiluminescent Substrate (PIERCE). Other detection methods will yield similar results. This antibody clearly detects a band at ~41 kDa consistent with human aldolase.

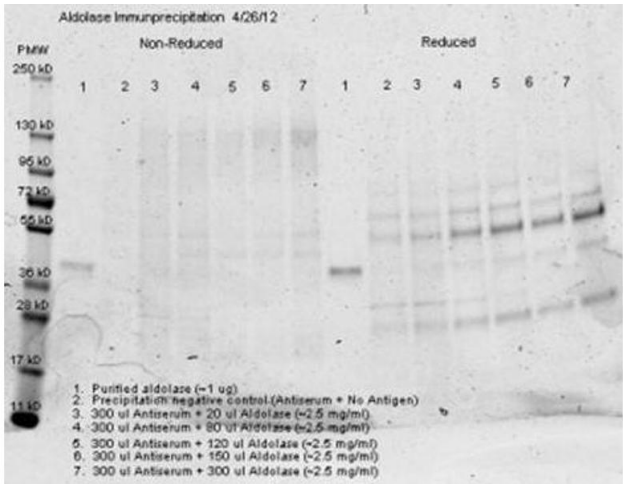


Image 2.

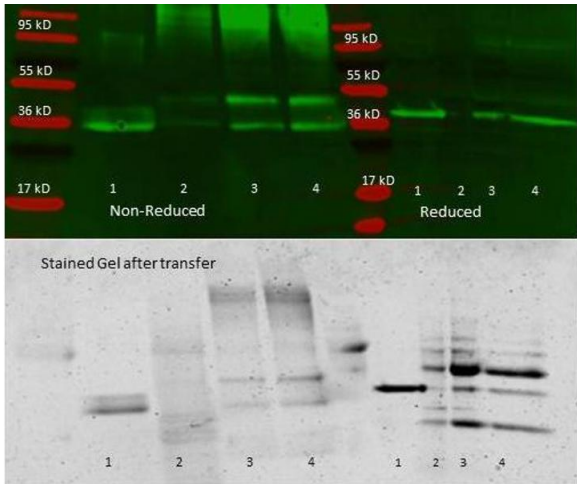


Image 3.