



[Go to Product page](#)

Datasheet for ABIN5596714
anti-Glucoamylase antibody (HRP)

1 Image

Overview

Quantity:	100 µg
Target:	Glucoamylase
Reactivity:	Rhizopus
Host:	Goat
Clonality:	Polyclonal
Conjugate:	This Glucoamylase antibody is conjugated to HRP
Application:	ELISA, Western Blotting (WB), Immunoprecipitation (IP)

Product Details

Immunogen:	Glucoamylase [Rhizopus] Immunogenotype:Native
Isotype:	IgG

Target Details

Target:	Glucoamylase
Abstract:	Glucoamylase Products
UniProt:	P07683

Application Details

Application Notes:	This product has been assayed against 1.0 µg of Glucoamylase [Rhizopus] in a standard capture ELISA using ABTS (2,2'-azino-bis-[3-ethylbenthiiazoline-6-sulfonic acid]) as a substrate
--------------------	--

Application Details

for 30 minutes at room temperature. A working dilution of 1:1,000 to 1:5,000 of the reconstitution concentration is suggested for this product.

ELISA Dilution: 1:10,000 - 1:40,000

Western Blot Dilution: 1:1,000 - 1:5,000

Restrictions: For Research Use only

Handling

Format: Lyophilized

Reconstitution: Restore with deionized water (or equivalent)

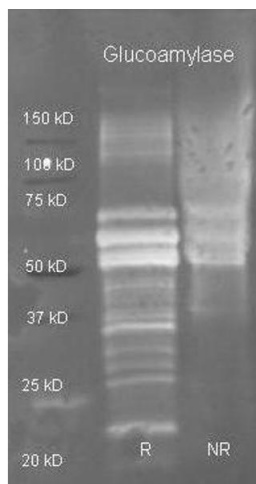
Buffer: 0.02 M Potassium Phosphate, 0.15 M Sodium Chloride, pH 7.2

Preservative: Gentamicin sulfate

Handling Advice: Do NOT add Sodium Azide!

Storage: 4 °C

Images



Western Blotting

Image 1. Goat anti Glucoamylase antibody (was used to detect purified glucoamylase under reducing (R) and non-reducing (NR) conditions. Reduced samples of purified target proteins contained 4% BME and were boiled for 5 minutes. Samples of ~1ug of protein per lane were run by SDS-PAGE. Protein was transferred to nitrocellulose and probed with 1:3000 dilution of primary antibody (ON 4 C in MB-070). Detection shown was using Dylight 488 conjugated Donkey anti goat (1:10K in TBS/MB-070 1 hr RT) .