

Datasheet for ABIN5596741
anti-HMW HCP antibody



[Go to Product page](#)

2 Images

Overview

Quantity:	100 µL
Target:	HMW HCP
Reactivity:	E. coli
Host:	Rabbit
Clonality:	Polyclonal
Conjugate:	This HMW HCP antibody is un-conjugated
Application:	ELISA, Western Blotting (WB)

Product Details

Purpose:	Anti-HMW Host Cell Proteins Antibody recognizes high molecular weight protein fractions from E.coli.
Immunogen:	Immunogen: Anti-HMW E.Coli Host Cell Proteins Antibody was prepared by repeated immunizations with a mixture high molecular weight (HMW) proteins from E.Coli (BL21). Immunogen Type: Native Protein
Cross-Reactivity (Details):	Reactivity is directed against E.coli Host Cell Proteins. Cross-reactivity with other species is likely but has not been determined. Reactivity against homologues from other sources is not known.
Characteristics:	Synonyms: E.Coli Host Cell Protein antibody, HCP antibody, Anti-HCP, Anti-Host Cell Protein, high molecular weight E.Coli HCP proteins antibody, HMW HCP Background: Anti-HMW Host Cell Proteins Antibody recognizes high molecular weight protein fractions from E.coli. This antibody has been analyzed by 2D electrophoresis western blot to assure highest possible coverage of E.coli HCP. Host Cell Proteins are process-related

Product Details

impurities derived from a host cell expression system that may be present in trace amounts in a final drug substance. HCP Antibodies are used to detect impurities in biologically-based therapeutics. Detecting impurities often unseen by 1-D electrophoresis, a 2D electrophoresis western blot analysis delivers more complete insight into the immunocoverage of protein components of the host cell lysate.

Purification: This whole rabbit antiserum was prepared by delipidation and defibrination followed by the addition of buffer salts and preservative.

Sterility: Sterile filtered

Target Details

Target: HMW HCP

Alternative Name: HMW E.Coli Host Cell Proteins

Application Details

Application Notes: Western Blot Dilution: 1:500 - 1:1000
ELISA Dilution: 1:1000-1:2000

Comment: Anti-HMW Host Cell Proteins Antibody detects over 250 E.coli HMW proteins and is suitable for western blotting and ELISA.

Restrictions: For Research Use only

Handling

Format: Liquid

Concentration: 77.5 mg/mL

Buffer: Buffer: 0.02 M Potassium Phosphate, 0.15 M Sodium Chloride, pH 7.2, 0.01% (w/v) Sodium Azide
Stabilizer: None

Preservative: Sodium azide

Precaution of Use: This product contains Sodium azide: a POISONOUS AND HAZARDOUS SUBSTANCE which should be handled by trained staff only.

Storage: 4 °C, -20 °C

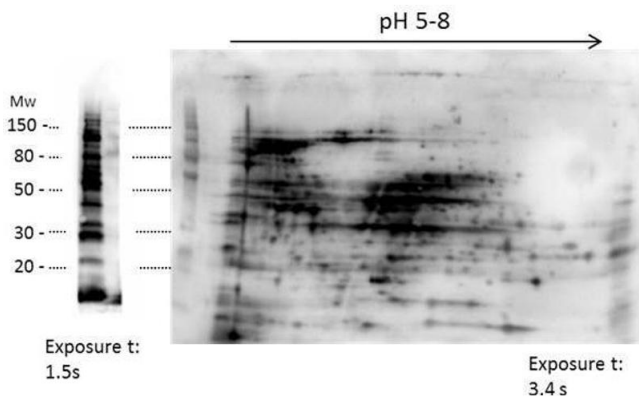
Storage Comment: Store HMW Host Cell Proteins Antibody at -20° C prior to opening. Aliquot contents and freeze

Handling

at -20° C or below for extended storage. Avoid cycles of freezing and thawing. Centrifuge product if not completely clear after standing at room temperature. This product is stable for several weeks at 4° C as an undiluted liquid. Dilute only prior to immediate use.

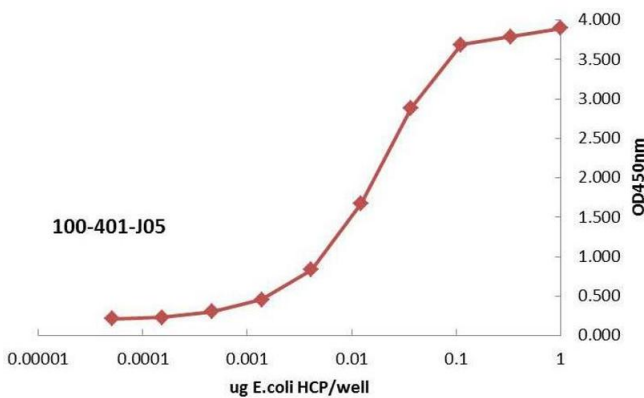
Expiry Date: 12 months

Images



Western Blotting

Image 1. 2D Western Blot of anti-E.coli High Molecular Weight Host Cell Protein antibody. Load: 35 µg HMW HCP. Primary antibody: Rabbit anti-HMW-HCP antibody at 1:200 for overnight at 4°C. Secondary antibody: Goat anti-rabbit secondary antibody at 1:10,000 for 30 min at RT. Block: ABIN925618 for 1 hour at RT.



ELISA

Image 2. ELISA of Rabbit anti-High Molecular Weight Host Cell Protein antibody. Antigen: BSA conjugates of HMW HCP. Coating amount: 1 µg per well titrated 1:3 in 1XPBS. Primary antibody: Anti-HMW-HCP antibody at 100 ng/well. Secondary antibody: Peroxidase rabbit secondary antibody at 1:10,000. Substrate: TMB for 30min.