



Datasheet for ABIN5596742 anti-HMW HCP antibody



[Go to Product page](#)

2 Images

Overview

Quantity:	100 µg
Target:	HMW HCP
Reactivity:	E. coli
Host:	Rabbit
Clonality:	Polyclonal
Conjugate:	This HMW HCP antibody is un-conjugated
Application:	ELISA, Western Blotting (WB)

Product Details

Purpose:	Anti-HMW Host Cell Proteins Antibody recognizes high molecular weight protein fractions from E.coli.
Immunogen:	Immunogen: Anti-HMW E.Coli Host Cell Proteins Antibody was prepared by repeated immunizations with a mixture high molecular weight (HMW) proteins from E.Coli. Immunogen Type: Native Protein
Isotype:	IgG
Specificity:	HMW Host Cell Protein A purified antibody is directed against high molecular weight E.coli Host Cell Proteins.
Characteristics:	Synonyms: E.Coli Host Cell Protein antibody, HCP antibody, Anti-HCP, Anti-Host Cell Protein, high molecular weight E.Coli HCP proteins antibody, HMW HCP Background: Anti-HMW Host Cell Proteins Antibody recognizes high molecular weight protein fractions from E.coli. This antibody has been analyzed by 2D electrophoresis western blot to

Product Details

assure highest possible coverage of E.coli HCP. Host Cell Proteins are process-related impurities derived from a host cell expression system that may be present in trace amounts in a final drug substance. HCP Antibodies are used to detect impurities in biologically-based therapeutics. Detecting impurities often unseen by 1-D electrophoresis, a 2D electrophoresis western blot analysis delivers more complete insight into the immunocoverage of protein components of the host cell lysate.

Purification: HMW Host Cell Protein A purified antibody is directed against high molecular weight E.coli Host Cell Proteins. The product was purified from monospecific antiserum by Protein A affinity chromatography.

Sterility: Sterile filtered

Target Details

Target: HMW HCP

Alternative Name: HMW E.Coli Host Cell Proteins

Application Details

Application Notes: Western Blot Dilution: 1:500 - 1:1000
ELISA Dilution: 1:1000-1:2000

Comment: Anti-HMW Host Cell Proteins Antibody detects over 250 E.coli HMW proteins and is suitable for western blotting and ELISA.

Restrictions: For Research Use only

Handling

Format: Liquid

Concentration: 1.38 mg/mL

Buffer: Buffer: 0.02 M Potassium Phosphate, 0.15 M Sodium Chloride, pH 7.2, 0.01% (w/v) Sodium Azide
Stabilizer: None

Preservative: Sodium azide

Precaution of Use: This product contains Sodium azide: a POISONOUS AND HAZARDOUS SUBSTANCE which should be handled by trained staff only.

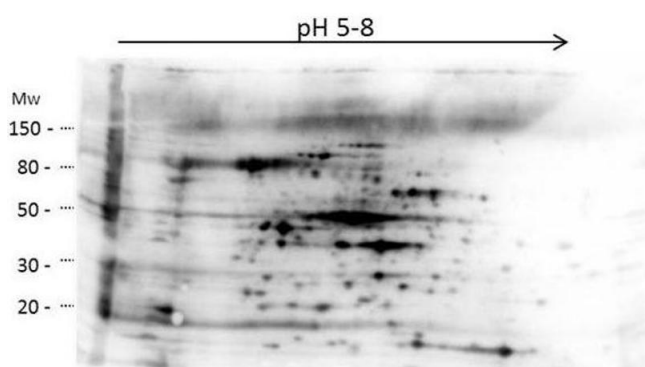
Handling

Storage: 4 °C, -20 °C

Storage Comment: Store vial at -20° C prior to opening. Aliquot contents and freeze at -20° C or below for extended storage. Avoid cycles of freezing and thawing. Centrifuge product if not completely clear after standing at room temperature. This product is stable for several weeks at 4° C as an undiluted liquid. Dilute only prior to immediate use.

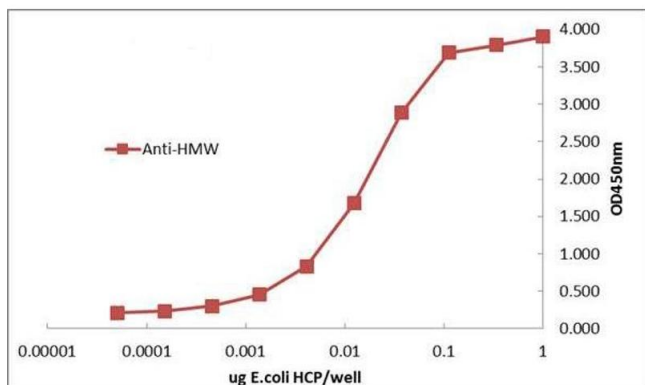
Expiry Date: 12 months

Validation report #104288 for Cleavage Under Targets and Release Using Nuclease (CUT&RUN)



Western Blotting

Image 1. 2D Western Blot of anti-E.coli High Molecular Weight Host Cell Protein antibody. Load: 35 µg HMW HCP. Primary antibody: Rabbit anti-HMW-HCP antibody at 1:200 for overnight at 4°C. Secondary antibody: Goat anti-rabbit secondary antibody at 1:10,000 for 30 min at RT. Block: ABIN925618 for 1 hour at RT.



ELISA

Image 2. ELISA of Rabbit Anti-E.coli High Molecular Weight Host Cell Protein Antibody. Antigen: Total HCP protein. Coating amount: 0.1 µg per well. Primary antibody: E.coli HMW HCP antibody at 10 µg/mL. Dilution series: 2-fold. Mid-point concentration: 5 ng/mL LMW HCP antibody. Secondary antibody: Peroxidase rabbit secondary antibody at 1:20,000. Substrate: TMB .