

Datasheet for ABIN5596746  
**anti-Ovalbumin antibody (FITC)**[Go to Product page](#)

## 1 Image

## Overview

Quantity:	100 µg
Target:	Ovalbumin (OVA)
Reactivity:	Chicken
Host:	Rabbit
Clonality:	Polyclonal
Conjugate:	This Ovalbumin antibody is conjugated to FITC
Application:	Western Blotting (WB), ELISA, Immunoprecipitation (IP), Fluorescence Microscopy (FM)

## Product Details

Immunogen:	Ovalbumin [Hen Egg White] Immunogenotype:Native
Isotype:	IgG
Characteristics:	Concentration Definition: by UV absorbance at 280 nm

## Target Details

Target:	Ovalbumin (OVA)
Alternative Name:	Ovalbumin ( <a href="#">OVA Products</a> )
Gene ID:	396058
UniProt:	<a href="#">P01012</a>

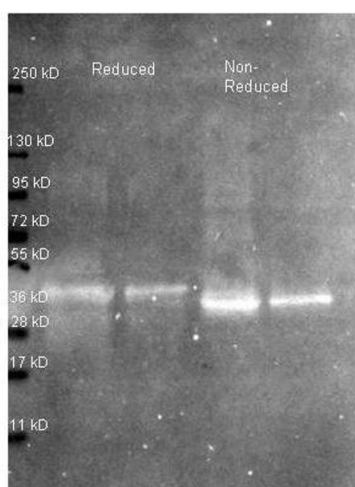
## Application Details

Application Notes:	Suitable for immunomicroscopy and flow cytometry or FACS analysis as well as other antibody based fluorescent assays. ELISA Dilution: 1:5,000 - 1:20,000 Fluorochrome Protein Value: 3.6 IF Microscopy Dilution: 1:500 - 1:2,500 Immunoprecipitation Dilution: 1:100 Western Blot Dilution: 1:2,000 - 1:10,000
Restrictions:	For Research Use only

## Handling

Format:	Lyophilized
Reconstitution:	Restore with deionized water (or equivalent)
Concentration:	10.0 mg/mL
Buffer:	0.02 M Potassium Phosphate, 0.15 M Sodium Chloride, pH 7.2
Preservative:	Sodium azide
Precaution of Use:	This product contains sodium azide: a POISONOUS AND HAZARDOUS SUBSTANCE which should be handled by trained staff only.
Storage:	4 °C

## Images



### Western Blotting

**Image 1.** Western Blot of Rabbit anti-Ovalbumin antibody. Lane 1: ~1 µg Ovalbumin protein reduced. Lane 2: 0.25 µg Ovalbumin protein reduced. Lane 3: ~1 µg Ovalbumin protein non-reduced. Lane 4: 0.25 µg Ovalbumin protein non-reduced. Primary antibody: Ovalbumin antibody at 1:5000 for overnight at 4°C. Secondary antibody: Atto 425 conjugated goat anti rabbit secondary antibody at 1:10,000 for 1.5 hr at RT. Block: MB-070 buffer overnight at 4°C. Predicted/Observed size: 42.9 kDa, ~36 kDa for ovalbumin. Other band(s): none.