

Datasheet for ABIN5596753
anti-STIM1 antibody (C-Term)



[Go to Product page](#)

1 Image

Overview

Quantity:	100 µg
Target:	STIM1
Binding Specificity:	C-Term
Reactivity:	Human
Host:	Rabbit
Clonality:	Polyclonal
Conjugate:	This STIM1 antibody is un-conjugated
Application:	Western Blotting (WB), ELISA

Product Details

Immunogen:	Immunogen: Stim 1 affinity purified antibody was prepared from whole rabbit serum produced by repeated immunizations with a synthetic peptide near the C-terminus of human Stim 1. Immunogen Type: Peptide
Isotype:	IgG
Cross-Reactivity (Details):	A BLAST analysis was used to suggest cross-reactivity with rat, human, bovine, and mouse based on 100% sequence homology. Cross-reactivity with Stim I from other sources has not been determined.
Purification:	Anti-Stim I was affinity purified from monospecific antiserum by immunoaffinity chromatography.

Target Details

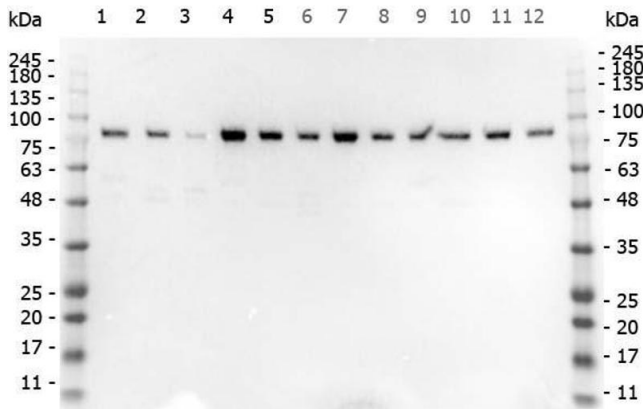
Target:	STIM1
Alternative Name:	Stim1 (STIM1 Products)
Background:	<p>Synonyms: Stromal interaction molecule 1, STIM1, GOK</p> <p>Background: Stim I antibody helps regulate calcium influx after the depletion of intracellular calcium stores. It functions as a calcium sensor in the endoplasmic reticulum via its EF-hand domain. After depletion of Ca²⁺, it is translocated from the endoplasmic reticulum to the plasma membrane so the calcium release-activated channel subunit is activated. Anti-Stim I antibody is ideal for investigators interested in Metabolism and Signal Transduction research.</p> <p>Gene Name: STIM1</p>
Pathways:	TCR Signaling , BCR Signaling

Application Details

Application Notes:	<p>Application Note: Anti-Stim I antibody is useful for ELISA, immunohistochemistry, and Western Blot. Specific conditions for reactivity should be optimized by the end user. Expect a band approximately ~77 kDa corresponding to the appropriate cell lysate or extract.</p> <p>Western Blot Dilution: 1 µg/mL</p> <p>ELISA Dilution: 1: 10,000</p>
Restrictions:	For Research Use only

Handling

Format:	Liquid
Concentration:	1.03 mg/mL
Buffer:	<p>Buffer: 0.02 M Potassium Phosphate, 0.15 M Sodium Chloride, pH 7.2</p> <p>Stabilizer: 50 % (v/v) Glycerol with 1 mg/mL Bovine Serum Albumin (BSA)</p>
Preservative:	Without preservative
Storage:	4 °C, -20 °C
Storage Comment:	Store vial at -20° C prior to opening. Aliquot contents and freeze at -20° C or below for extended storage. Avoid cycles of freezing and thawing. Centrifuge product if not completely clear after standing at room temperature. This product is stable for several weeks at 4° C as an undiluted liquid. Dilute only prior to immediate use.
Expiry Date:	12 months



Western Blotting

Image 1. Western Blot of Rabbit anti-STIM1 antibody.
Marker: Opal Pre-stained ladder . Lane 1: HEK293 lysate .
Lane 2: HeLa Lysate . Lane 3: MCF-7 Lysate . Lane 4: Jurkat
Lysate . Lane 5: A431 Lysate . Lane 6: A549 Lysate . Lane 7:
LNCap Lysate . Lane 8: MOLT-4 Lysate . Lane 9: Ramos
Lysate . Lane 10: Raji Lysate . Lane 11: A-172 Lysate . Lane
12: NIH/3T3 Lysate . Load: 35 µg per lane. Primary antibody:
STIM1 antibody at 1ug/mL overnight at 4C. Secondary
antibody: Peroxidase rabbit secondary antibody at 1:30,000
for 60 min at RT. Blocking Buffer: 1% Casein-TTBS for 30
min at RT. Predicted/Observed size: 77kDa for STIM1.