

Datasheet for ABIN559680

**anti-CD180 antibody****2** Images**3** Publications[Go to Product page](#)

## Overview

Quantity:	0.1 mg
Target:	CD180
Reactivity:	Human
Host:	Mouse
Clonality:	Monoclonal
Conjugate:	This CD180 antibody is un-conjugated
Application:	Flow Cytometry (FACS), Immunoprecipitation (IP)

## Product Details

Immunogen:	Human tonsillar B cells
Clone:	G28-8
Isotype:	IgG1 kappa
Specificity:	The mouse monoclonal antibody G28-8 recognizes an extracellular epitope of CD180, a 95-105 kDa TLR-like glycoprotein expressed on peripheral blood monocytes and dendritic cells, mantle zone B cells and marginal zone B cells, but very weakly on germinal center B cells.
Cross-Reactivity (Details):	Human
Purification:	Purified by protein-A affinity chromatography.
Purity:	> 95 % (by SDS-PAGE)

## Target Details

Target:	CD180
Alternative Name:	CD180 ( <a href="#">CD180 Products</a> )
Background:	CD180 Molecule,CD180, also known as RP105 (or Bgp95, LY64) is a type I membrane glycoprotein of Toll-like receptor (TLR) family. Its cytoplasmic tail is short and unlike the TLRs, it lacks the TIR domain. CD180 expression is dependent on the coexpression of its helper molecule, MD-1, and mirrors that of TLR4 on antigen-presenting cells. CD180 regulates recognition of LPS and signaling in B cells, via interacting directly with the TLR4 signaling complex, inhibiting its ability to bind microbial ligands. Ligation of CD180 by monoclonal antibodies leads to B cell activation, upregulation of CD80/CD86, and increase in cell size.,LY64, Ly78, RP105, Bgp95
Gene ID:	4064
UniProt:	<a href="#">Q99467</a>
Pathways:	<a href="#">Cellular Response to Molecule of Bacterial Origin</a> , <a href="#">Toll-Like Receptors Cascades</a>

## Application Details

Application Notes:	Flow cytometry: Recommended dilution: 2 µg/mL.
Restrictions:	For Research Use only

## Handling

Concentration:	1 mg/mL
Buffer:	Phosphate buffered saline (PBS), pH 7.4, 15 mM sodium azide
Preservative:	Sodium azide
Precaution of Use:	This product contains Sodium azide: a POISONOUS AND HAZARDOUS SUBSTANCE which should be handled by trained staff only.
Handling Advice:	<b>Do not freeze.</b>
Storage:	4 °C
Storage Comment:	Store at 2-8°C. Do not freeze.

## Publications

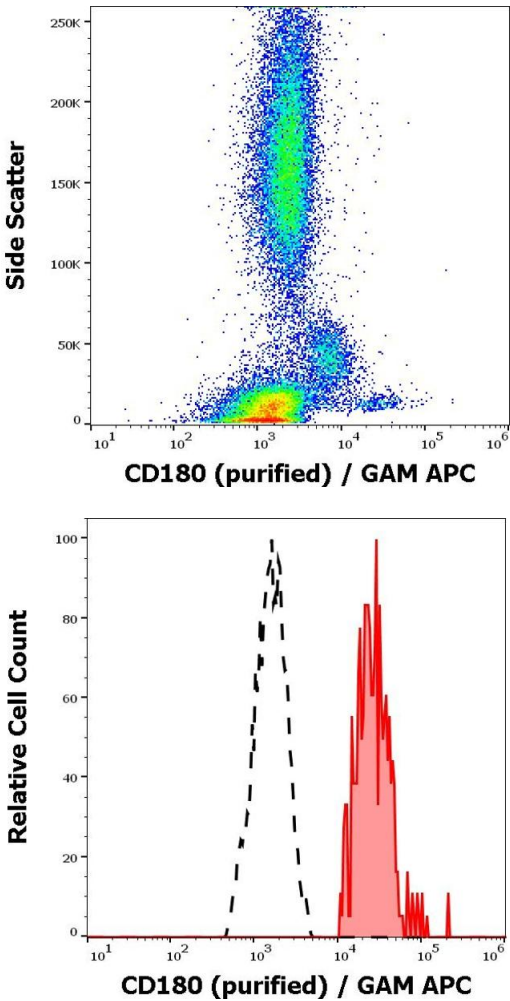
Product cited in:	Olson, Graves, Shu, Ryan, Clark: "Caspase activity is required for stimulated B lymphocytes to
-------------------	--

enter the cell cycle." in: **Journal of immunology (Baltimore, Md. : 1950)**, Vol. 170, Issue 12, pp. 6065-72, (2003) ([PubMed](#)).

Clark, Shu, Lüscher, Draves, Banchereau, Ledbetter, Valentine: "Activation of human B cells. Comparison of the signal transduced by IL-4 to four different competence signals." in: **Journal of immunology (Baltimore, Md. : 1950)**, Vol. 143, Issue 12, pp. 3873-80, (1990) ([PubMed](#)).

Valentine, Clark, Shu, Norris, Ledbetter: "Antibody to a novel 95-kDa surface glycoprotein on human B cells induces calcium mobilization and B cell activation." in: **Journal of immunology (Baltimore, Md. : 1950)**, Vol. 140, Issue 12, pp. 4071-8, (1988) ([PubMed](#)).

Images



Flow Cytometry

**Image 1.** Flow cytometry surface staining pattern of human peripheral blood stained using anti-human CD180 (G28-8) purified antibody (concentration in sample 6 µg/mL) GAM APC.

Flow Cytometry

**Image 2.** Separation of human CD180 positive lymphocytes (red-filled) from CD180 negative lymphocytes (black-dashed) in flow cytometry analysis (surface staining) of human peripheral whole blood stained using anti-human CD180 (G28-8) purified antibody (concentration in sample 6 µg/mL) GAM APC.