



[Go to Product page](#)

Datasheet for ABIN5596813

anti-Acid Phosphatase antibody (HRP)

1 Image

Overview

Quantity:	100 µg
Target:	Acid Phosphatase (ACP)
Reactivity:	Potato
Host:	Rabbit
Clonality:	Polyclonal
Conjugate:	This Acid Phosphatase antibody is conjugated to HRP
Application:	Western Blotting (WB), ELISA

Product Details

Immunogen:	Immunogen: Acid Phosphatase [Potato] Immunogen Type: Native Protein
Isotype:	IgG
Cross-Reactivity (Details):	Cross reactivity against Acid Phosphatase from other tissues and species may occur but have not been specifically determined.
Purification:	Acid Phosphatase is an IgG fraction antibody purified from monospecific antiserum by a multi-step process which includes delipidation, salt fractionation and ion exchange chromatography followed by extensive dialysis against the buffer stated above. Assay by immunoelectrophoresis resulted in a single precipitin arc against anti-Rabbit Serum as well as purified and partially purified Acid Phosphatase [Potato].

Target Details

Target:	Acid Phosphatase (ACP)
Alternative Name:	Acid Phosphatase (ACP Products)
Background:	<p>Synonyms: Acid phosphatase 1 soluble antibody, Acid phosphatase of erythrocyte antibody, Adipocyte acid phosphatase antibody, Cytoplasmic phosphotyrosyl protein phosphatase antibody, HAAP antibody</p> <p>Background: Acid Phosphatase is a phosphatase, a type of enzyme, used to free attached phosphate groups from other molecules during digestion. It is basically a phosphomonoesterase. It is stored in lysosomes and functions when these fuse with endosomes, which are acidified while they function, therefore, it has an acid pH optimum. Different forms of acid phosphatase are found in different organs, and their serum levels are used to evaluate the success of the surgical treatment of prostate cancer.</p> <p>Gene Name: PAP3</p>
UniProt:	Q6J5M8

Application Details

Application Notes:	<p>Application Note: Anti-Acid Phosphatase is suitable for use in ELISA, western blot, and immunohistochemistry. Optimal titers should be optimized by researcher.</p> <p>Western Blot Dilution: 1:500 - 1:2,000</p> <p>ELISA Dilution: 1:4,000 - 1:20,000</p>
--------------------	--

Restrictions:	For Research Use only
---------------	-----------------------

Handling

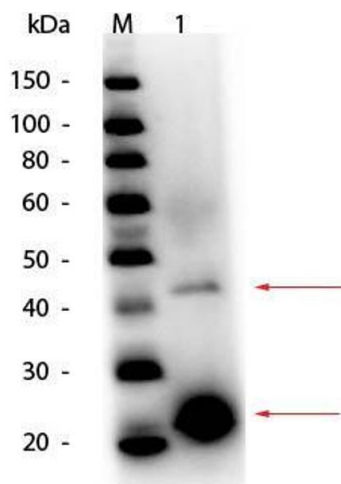
Format:	Lyophilized
Reconstitution:	<p>Reconstitution Volume: 100 µL</p> <p>Reconstitution Buffer: Restore with deionized water (or equivalent)</p>
Concentration:	1.0 mg/mL
Buffer:	Buffer: 0.02 M Potassium Phosphate, 0.15 M Sodium Chloride, pH 7.2
Preservative:	Gentamicin sulfate
Precaution of Use:	This product contains Gentamicin sulfate: a POISONOUS AND HAZARDOUS SUBSTANCE which should be handled by trained staff only.
Storage:	4 °C, -20 °C

Handling

Storage Comment: Store vial at 4° C prior to restoration. For extended storage aliquot contents and freeze at -20° C or below. Avoid cycles of freezing and thawing. Centrifuge product if not completely clear after standing at room temperature. This product is stable for several weeks at 4° C as an undiluted liquid. Dilute only prior to immediate use.

Expiry Date: 12 months

Images



Western Blotting

Image 1. Western Blot of Acid Phosphatase (Potato) Antibody. Lane 1: Acid Phosphatase (Potato). Load: 50 ng per lane. Primary antibody: Acid Phosphatase Antibody at 1:1,000 overnight at 4°C. Secondary antibody: HRP rabbit secondary antibody at 1:40,000 for 30 min at RT. Block: ABIN925618 for 30 min at RT. Predicted/Observed size: 49 kDa/42-45kDa for Acid Phosphatase (Potato) Antibody. Other band(s): Acid Phosphatase monomer fragmentation.