

Datasheet for ABIN5596827
anti-COL2A1 antibody (FITC)



[Go to Product page](#)

1 Image

Overview

| | |
|--------------|--|
| Quantity: | 50 µg |
| Target: | COL2A1 |
| Reactivity: | Human, Cow |
| Host: | Rabbit |
| Clonality: | Polyclonal |
| Conjugate: | This COL2A1 antibody is conjugated to FITC |
| Application: | Western Blotting (WB), Immunohistochemistry (IHC), ELISA, Immunoprecipitation (IP), Fluorescence Microscopy (FM), Flow Cytometry (FACS) |

Product Details

| | |
|-----------------------------|---|
| Purpose: | Collagen Type II Antibody Fluorescein Conjugated |
| Immunogen: | Immunogen: Anti-Collagen Type II antibody was produced by repeated immunizations with Collagen Type II from adult human knee cartilage and bovine nasal cartilage. Immunogen Type: Native Protein |
| Isotype: | IgG |
| Cross-Reactivity (Details): | Some class specific anti-collagens may be specific for three-dimensional epitopes which may result in diminished reactivity with denatured collagen or formalin-fixed, paraffin embedded tissues. |
| Characteristics: | Synonyms: rabbit anti-Collagen Type II antibody fluorescein conjugation, FITC conjugated rabbit anti-Collagen Type II antibody, Collagen alpha-1 (II) chain, Alpha-1 type II collagen, Cartilage collagen antibody, Chondrocalcin antibody, COL2A1 antibody |

Product Details

| | |
|---------------|--|
| Purification: | This product has been prepared by immunoaffinity chromatography using immobilized antigens followed by extensive cross-adsorption against other collagens. |
|---------------|--|

Target Details

| | |
|-------------------|---|
| Target: | COL2A1 |
| Alternative Name: | COL2A1 (COL2A1 Products) |
| Background: | Background: Anti-Collagen Type II Fluorescein Conjugated Antibody detects Type-II collagen which is the basis for articular cartilage and hyaline cartilage. It makes up 50 % of all protein in cartilage and 85-90 % of collagen of articular cartilage. Type II collagen does form fibrils which allow cartilage to entrap the proteoglycan aggregate as well as provide tensile strength to the tissue. Anti-Collagen Type II antibody is ideal for investigators involved in Immunology, Neuroscience and Signal Transduction research. |
| Gene ID: | 1280 |
| NCBI Accession: | NP_001835 |
| UniProt: | P02458 |
| Pathways: | Sensory Perception of Sound , Growth Factor Binding |

Application Details

| | |
|--------------------|--|
| Application Notes: | Flow Cytometry Dilution: User Optimized Immunohistochemistry Dilution: 1:200 - 1:1,000 Application Note: Anti-Collagen Type II Fluorescein Conjugated Antibody is suitable for western blotting, IP, IHC and for ELISA. Researchers should determine optimal titers for applications that are not stated below. Western Blot Dilution: User Optimized Immunoprecipitation Dilution: 1:100 ELISA Dilution: 1:10,000 - 1:50,000 IF Microscopy Dilution: User Optimized |
| Restrictions: | For Research Use only |

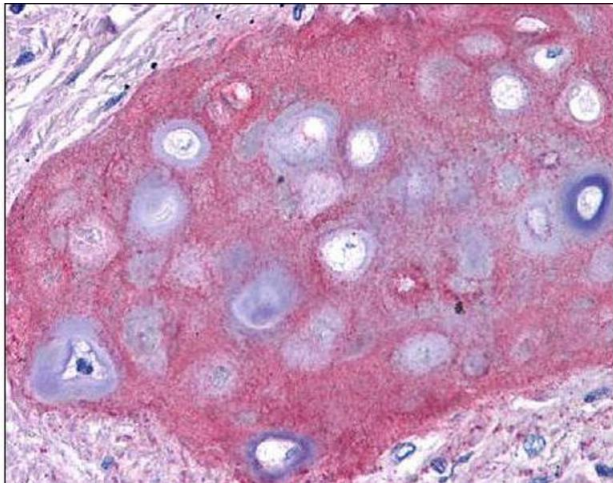
Handling

| | |
|-----------------|-----------------------------|
| Format: | Lyophilized |
| Reconstitution: | Reconstitution Volume: 50µL |

Handling

| | |
|--------------------|--|
| | Reconstitution Buffer: Restore with deionized water (or equivalent) |
| Concentration: | 1.0 mg/mL |
| Buffer: | Buffer: 0.01 M Sodium Phosphate, 0.25 M Sodium Chloride, pH 7.2 Stabilizer: 10 mg/mL Bovine Serum Albumin (BSA) - Immunoglobulin and Protease free Preservative: 0.01 % (w/v) Sodium Azide |
| Preservative: | Sodium azide |
| Precaution of Use: | This product contains Sodium azide: a POISONOUS AND HAZARDOUS SUBSTANCE which should be handled by trained staff only. |
| Storage: | 4 °C,-20 °C |
| Storage Comment: | Store vial at 4° C prior to restoration. Restore with 0.05 mL of deionized water (or equivalent). For extended storage aliquot contents and freeze at -20° C or below. Avoid cycles of freezing and thawing. Centrifuge product if not completely clear after standing at room temperature. This product is stable for several weeks at 4° C as an undiluted liquid. Dilute only prior to immediate use. |
| Expiry Date: | 12 months |

Images



Immunohistochemistry

Image 1. Immunohistochemistry of Rabbit Anti-Collagen II Biotin Conjugated Antibody. Tissue: human bronchiolar cartilage (shown). Though not shown, faint to moderate staining of tonsillar squamous epithelium, prostatic stroma, breast, colon, placenta, and dermal connective tissues was also observed. All other tissues, including brain, breast epithelium, colon epithelium, heart, intestine, kidney, liver, lung, skeletal muscle, pancreas, spleen, testis, thymus, thyroid, and uterus were negative for staining. Fixation: formalin fixed paraffin embedded. Antigen retrieval: 0.01 M sodium citrate buffer, pH 6.0 at 99-100°C - 20 minutes. Primary antibody: collagen II antibody at 10 µg/mL for 1 h at RT. Secondary antibody: Peroxidase rabbit secondary antibody at 1:10,000 for 45 min at RT. Localization: Collagen

II is extracellular. Staining: Collagen II as precipitated red signal with hematoxylin purple nuclear counterstain.