



[Go to Product page](#)

Datasheet for ABIN5596832 **anti-COL3 antibody (FITC)**

1 Image

Overview

Quantity:	50 µg
Target:	COL3
Reactivity:	Human, Cow, Mammalian
Host:	Rabbit
Clonality:	Polyclonal
Conjugate:	This COL3 antibody is conjugated to FITC
Application:	ELISA, Western Blotting (WB), Immunohistochemistry (IHC), Immunoprecipitation (IP)

Product Details

Immunogen:	Immunogen: Collagen Type III from human and bovine placenta Immunogen Type: Native Protein
Isotype:	IgG
Cross-Reactivity (Details):	Typically negligible cross reactivity against other types of collagens was detected by ELISA against purified standards. Some class specific anti-collagens may be specific for three-dimensional epitopes which may result in diminished reactivity with denatured collagen or formalin-fixed, paraffin embedded tissues. This antibody reacts with most mammalian Type III collagens and has negligible cross-reactivity with Type I, II, IV, V and VI collagens. Non-specific cross reaction of anti-collagen antibodies with other human serum proteins or non-collagen extracellular matrix proteins is negligible.
Purification:	Anti-Collagen III has been prepared by immunoaffinity chromatography using immobilized antigens followed by extensive cross-adsorption against other collagens, human serum proteins and non-collagen extracellular matrix proteins to remove any unwanted specificities.

Target Details

Target:	COL3
Alternative Name:	Collagen Type III (COL3 Products)
Background:	<p>Synonyms: Collagen type III alpha 1 antibody, Collagen type III alpha antibody, EDS4A antibody, Ehlers Danlos syndrome type IV, autosomal dominant antibody, Fetal collagen antibody</p> <p>Background: In muscle tissue, collagen serves as a major component of the endomysium. Collagen constitutes one to two percent of muscle tissue, and accounts for 6 % of the weight of strong, tendinous muscles. A collagen may be defined as a protein containing sizable domain(s) of triple-helical conformation. Type IV collagen is a major macromolecular constituent of basement membranes and can be readily isolated from basement-membrane-rich tissues or highly vascularized tissues such as the placental villi. This collagen appears to be largely restricted to structures identifiable as basement membranes. In contrast, type VI collagen appears to be prevalent in several tissues even though it has been isolated largely from placental villi preparations. The extent to which type VII and VIII collagens are distributed is not known.</p> <p>Gene Name: COL3A1</p>

Gene ID: 1281

UniProt: [P02461](#)

Application Details

Application Notes:	<p>Immunohistochemistry Dilution: 1:200 - 1:1,000</p> <p>Application Note: Anti-Collagen Type III Fluorescein Conjugated Antibody is suitable for western blotting, IHC and for ELISA. Researchers should determine optimal titers for applications that are not stated below.</p> <p>Western Blot Dilution: 1:1,000 - 1:5,000</p> <p>Immunoprecipitation Dilution: 1:100</p> <p>ELISA Dilution: 1:10,000 - 1:50,000</p>
--------------------	--

Restrictions: For Research Use only

Handling

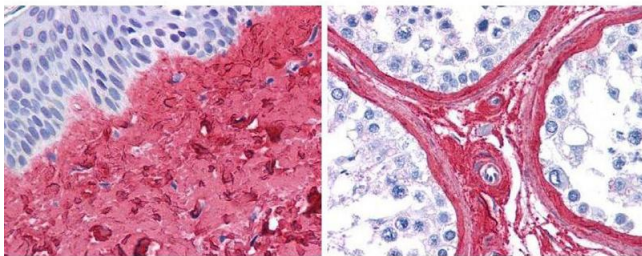
Format: Lyophilized

Reconstitution: Reconstitution Volume: 100 µL to 20 µL
Reconstitution Buffer: Restore with deionized water (or equivalent)

Handling

Concentration:	1.0 mg/mL
Buffer:	Buffer: 0.01 M Sodium Phosphate, 0.25 M Sodium Chloride, pH 7.2 Stabilizer: 10 mg/mL Bovine Serum Albumin (BSA) - Immunoglobulin and Protease free
Preservative:	Sodium azide
Precaution of Use:	This product contains Sodium azide: a POISONOUS AND HAZARDOUS SUBSTANCE which should be handled by trained staff only.
Storage:	4 °C,-20 °C
Storage Comment:	Store vial at 4° C prior to restoration. For extended storage aliquot contents and freeze at -20° C or below. Avoid cycles of freezing and thawing. Centrifuge product if not completely clear after standing at room temperature. This product is stable for several weeks at 4° C as an undiluted liquid. Dilute only prior to immediate use.
Expiry Date:	12 months

Images



Immunohistochemistry

Image 1. anti collagen III antibody (600-401-105 Lot 26016, 1:400, 45 min RT) showed strong staining in FFPE sections of human skin(left, dermis) with moderate to strong red staining and testis (right) where strong staining was observed within connective tissue between seminiferous tubules. The antibody showed strong extracellular staining within connective tissues across many organs with minimal background staining. Slides were steamed in 0.01 M sodium citrate buffer, pH 6.0 at 99-100°C - 20 minutes for antigen retrieval. Images provided courtesy of LifeSpan Biosciences, Seattle, WA