



[Go to Product page](#)

Datasheet for ABIN5596840

## anti-Collagen Type V antibody

### 1 Image

#### Overview

Quantity:	500 µg
Target:	Collagen Type V (COL5)
Reactivity:	Human, Cow, Mammalian
Host:	Rabbit
Clonality:	Polyclonal
Conjugate:	This Collagen Type V antibody is un-conjugated
Application:	ELISA, Western Blotting (WB), Immunohistochemistry (IHC), Immunoprecipitation (IP)

#### Product Details

Immunogen:	Immunogen: Collagen Type V from human and bovine placenta Immunogen Type: Native Protein
Isotype:	IgG
Cross-Reactivity (Details):	Typically negligible cross reactivity against other types of collagens was detected by ELISA against purified standards. Some class specific anti-collagens may be specific for three-dimensional epitopes which may result in diminished reactivity with denatured collagen or formalin-fixed, paraffin embedded tissues. This antibody reacts with most mammalian Type V collagens and has negligible cross-reactivity with Type I, II, III, IV or VI collagens. Non-specific cross reaction of anti-collagen antibodies with other human serum proteins or non-collagen extracellular matrix proteins is negligible.
Purification:	This product has been prepared by immunoaffinity chromatography using immobilized antigens followed by extensive cross-adsorption against other collagens, human serum proteins and non-collagen extracellular matrix proteins to remove any unwanted specificities.

## Target Details

---

Target:	Collagen Type V (COL5)
Alternative Name:	Collagen Type V ( <a href="#">COL5 Products</a> )
Background:	<p>Synonyms: COL5A2 protein antibody, Col5A3 antibody, Collagen fetal membrane A polypeptide antibody</p> <p>Background: Rockland produces highly active antibodies and conjugates to collagens. Collagens are highly conserved throughout evolution and are characterized by an uninterrupted "Glycine-X-Y" triplet repeat that is a necessary part of the triple helical structure. For these reasons, it is often extremely difficult to generate antibodies with specificities to collagens. The development of 'type' specific antibodies is dependent on NON-DENATURED three-dimensional epitopes. Rockland extensively purifies collagens for immunization from human and bovine placenta and cartilage by limited pepsin digestion and selective salt precipitation. This preparation results in a native conformation of the protein. Antibodies are isolated from rabbit antiserum and are extensively cross-adsorbed by immunoaffinity purification to produce 'type' specific antibodies. Greatly diminished reactivity and selectivity of these antibodies will result if denaturing and reducing conditions are used for SDS-PAGE and immunoblotting.</p> <p>Gene Name: COL5A1</p>
Gene ID:	50509
UniProt:	<a href="#">P25940</a>

## Application Details

---

Application Notes:	<p>Immunohistochemistry Dilution: 1:50 - 1:200</p> <p>Application Note: Anti-Collagen antibodies have been used for indirect trapping ELISA for quantitation of antigen in serum using a standard curve, for immunoprecipitation and for native (non-denaturing, non-dissociating) PAGE and western blotting for highly sensitive qualitative analysis.</p> <p>Western Blot Dilution: 1:1,000 - 1:10,000</p> <p>Immunoprecipitation Dilution: 1:100</p> <p>ELISA Dilution: 1:5,000 - 1:50,000</p>
--------------------	---

Restrictions:	For Research Use only
---------------	-----------------------

## Handling

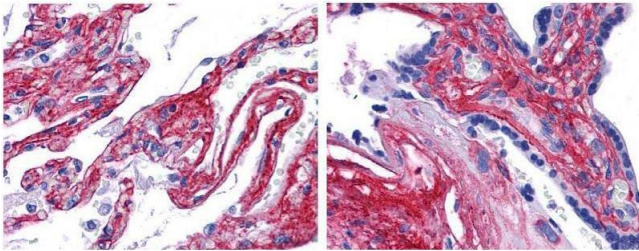
---

Format:	Liquid
Concentration:	1.0 mg/mL

## Handling

Buffer:	Buffer: 0.125 M Sodium Borate, 0.075 M Sodium Chloride, 0.005 M EDTA, pH 8.0 Stabilizer: None
Preservative:	Sodium azide
Precaution of Use:	This product contains Sodium azide: a POISONOUS AND HAZARDOUS SUBSTANCE which should be handled by trained staff only.
Storage:	4 °C, -20 °C
Storage Comment:	Store vial at 4° C prior to opening. This product is stable at 4° C as an undiluted liquid. Dilute only prior to immediate use. For extended storage, mix with an equal volume of glycerol, aliquot contents and freeze at -20° C or below. Avoid cycles of freezing and thawing.
Expiry Date:	12 months

## Images



### Immunohistochemistry

**Image 1.** anti collagen V antibody (600-401-107 Lot 22063, 1:200, 45 min RT) showed strong staining in FFPE sections of human lung (left) with strong staining within alveoli, vessels, and in connective tissue spaces; and placenta (right) with strong staining observed in stromal and connective tissue spaces and vessel walls. Slides were steamed in 0.01 M sodium citrate buffer, pH 6.0 at 99-100°C - 20 minutes for antigen retrieval. Images provided courtesy of LifeSpan Biosciences, Seattle, WA