



[Go to Product page](#)

## Datasheet for ABIN5596846 **anti-COL6 antibody (Biotin)**

### 1 Image

#### Overview

Quantity:	100 µg
Target:	COL6
Reactivity:	Human, Cow, Mammalian
Host:	Rabbit
Clonality:	Polyclonal
Conjugate:	This COL6 antibody is conjugated to Biotin
Application:	Western Blotting (WB), ELISA, Immunohistochemistry (IHC), Immunoprecipitation (IP)

#### Product Details

Immunogen:	Immunogen: Collagen Type VI from human and bovine placenta Immunogen Type: Native Protein
Isotype:	IgG
Cross-Reactivity (Details):	Typically negligible cross reactivity against other types of collagens was detected by ELISA against purified standards. Some class specific anti-collagens may be specific for three-dimensional epitopes which may result in diminished reactivity with denatured collagen or formalin-fixed, paraffin embedded tissues. This antibody reacts with most mammalian Type VI collagens and has negligible cross-reactivity with Type I, II, III, IV and V collagens. Non-specific cross reaction of anti-collagen antibodies with other human serum proteins or non-collagen extracellular matrix proteins is negligible.
Purification:	This product has been prepared by immunoaffinity chromatography using immobilized antigens followed by extensive cross-adsorption against other collagens, human serum proteins and non-collagen extracellular matrix proteins to remove any unwanted specificities.

## Target Details

---

Target:	COL6
Alternative Name:	Collagen Type VI ( <a href="#">COL6 Products</a> )
Background:	<p>Synonyms: CollagenVI antibody, Human mRNA for collagen VI alpha 1 C terminal globular domain antibody</p> <p>Background: Collagen Type VI Antibody Biotin Conjugated is specific for collagen type VI protein. The collagens are a superfamily of proteins that play a role in maintaining the integrity of various tissues. Collagen VI is a major structural component of microfibrils. The basic structural unit of collagen VI is a heterotrimer of the alpha1(VI), alpha2(VI), and alpha3(VI) chains. The alpha2(VI) and alpha3(VI) chains are encoded by the COL6A2 and COL6A3 genes, respectively. The protein encoded by this gene is the alpha 1 subunit of type VI collagen (alpha1(VI) chain). Mutations in the genes that code for the collagen VI subunits result in the autosomal dominant disorder, Bethlem myopathy.</p> <p>Gene Name: COL6A1</p>
Gene ID:	1291
UniProt:	<a href="#">P12109</a>

## Application Details

---

Application Notes:	<p>Immunohistochemistry Dilution: 1:200 - 1:1,000</p> <p>Application Note: Anti-Collagen Type VI (RABBIT) Antibody Biotin Conjugated is suitable for western blot, immunoprecipitation, and immunohistochemistry. Researchers should determine optimal titers for applications that are not stated below.</p> <p>Western Blot Dilution: 1:5,000 - 1:10,000</p> <p>Immunoprecipitation Dilution: 1:100</p> <p>ELISA Dilution: 1:10,000 - 1:50,000</p>
Restrictions:	For Research Use only

## Handling

---

Format:	Lyophilized
Reconstitution:	<p>Reconstitution Volume: 100 µL</p> <p>Reconstitution Buffer: Restore with deionized water (or equivalent)</p>
Concentration:	1.0 mg/mL
Buffer:	Buffer: 0.125 M Sodium Borate, 0.075 M Sodium Chloride, 0.005 M EDTA, pH 8.0

## Handling

Stabilizer: 10 mg/mL Bovine Serum Albumin (BSA) - Immunoglobulin and Protease free

Preservative: Sodium azide

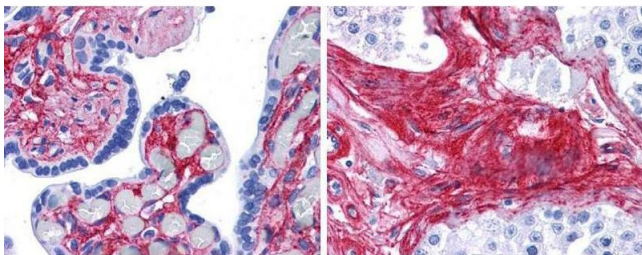
Precaution of Use: This product contains Sodium azide: a POISONOUS AND HAZARDOUS SUBSTANCE which should be handled by trained staff only.

Storage: 4 °C, -20 °C

Storage Comment: Store vial at 4° C prior to restoration. Restore with 0.1 mL of deionized water (or equivalent). For extended storage aliquot contents and freeze at -20° C or below. Avoid cycles of freezing and thawing. Centrifuge product if not completely clear after standing at room temperature. This product is stable for several weeks at 4° C as an undiluted liquid. Dilute only prior to immediate use. Expiration date is one (1) year from date of restoration.

Expiry Date: 12 months

## Images



### Immunohistochemistry

**Image 1.** Immunohistochemistry of Rabbit anti-collagen VI antibody. Tissue: human placenta (left), testis (right). Fixation: formalin fixed paraffin embedded. Antigen retrieval: steamed in 0.01 M sodium citrate buffer, pH 6.0 at 99-100°C - 20 minutes. Primary antibody: collagen VI antibody at 10 µg/mL for 1 h at RT. Secondary antibody: Peroxidase rabbit secondary antibody at 1:10,000 for 45 min at RT. Localization: collagen VI is extracellular. Staining: collagen VI as precipitated red signal red staining of stromal and extracellular spaces in the placenta and extracellular spaces between seminiferous tubules in the testis, with hematoxylin purple nuclear counterstain.