



[Go to Product page](#)

Datasheet for ABIN5596879

anti-Beta-Phosphoglucomutase antibody (HRP)

1 Image

Overview

Quantity:	100 µg
Target:	Beta-Phosphoglucomutase
Reactivity:	Lactococcus lacti
Host:	Goat
Clonality:	Polyclonal
Conjugate:	This Beta-Phosphoglucomutase antibody is conjugated to HRP
Application:	Western Blotting (WB), ELISA

Product Details

Immunogen:	Beta Phosphoglucomutase [Lactococcus lacti] Immunogen type: Native
Isotype:	IgG
Characteristics:	Concentration Definition: by UV absorbance at 280 nm

Target Details

Target:	Beta-Phosphoglucomutase
Alternative Name:	Beta-Phosphoglucomutase (Beta-Phosphoglucomutase Products)
Gene ID:	1114041
UniProt:	P71447

Application Details

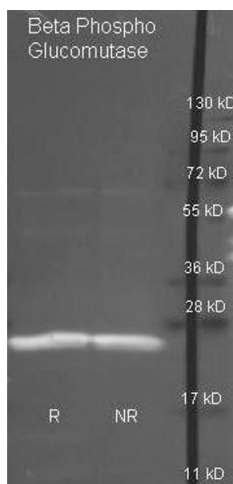
Application Notes:	This product has been assayed against 1.0 µg of b-Phosphoglucomutase [<i>Lactococcus lacti</i>] in a standard capture ELISA using ABTS (2,2'-azino-bis-[3-ethylbenthiiazoline-6-sulfonic acid]) as a substrate for 30 minutes at room temperature. A working dilution of 1:5,000 to 1:20,000 is suggested for this product. ELISA Dilution: 1:10,000 - 1:40,000 Western Blot Dilution: 1:1,000 - 1:5,000
--------------------	--

Restrictions:	For Research Use only
---------------	-----------------------

Handling

Format:	Lyophilized
Reconstitution:	Restore with deionized water (or equivalent)
Concentration:	10.0 mg/mL
Buffer:	0.02 M Potassium Phosphate, 0.15 M Sodium Chloride, pH 7.2
Preservative:	Gentamicin sulfate
Handling Advice:	Do NOT add Sodium Azide!
Storage:	4 °C

Images



Western Blotting

Image 1. Goat anti antibody (was used to detect purified Beta Phospho Glucomutase under reducing (R) and non-reducing (NR) conditions. Reduced samples of protein contained 4% BME and were boiled for 5 minutes. Samples of ~1µg of protein per lane were run by SDS-PAGE. Protein was transferred to nitrocellulose and probed with 1:3000 dilution of primary antibody (ON 4 C in MB-070). Detection shown was using Dylight 488 conjugated Donkey anti goat (1:10K in TBS/MB-070 1 hr RT)..