

Datasheet for ABIN5596884

anti-ABCB8 antibody (Internal Region)



[Go to Product page](#)

1 Image

Overview

Quantity:	100 µL
Target:	ABCB8
Binding Specificity:	Internal Region
Reactivity:	Human
Host:	Rabbit
Clonality:	Polyclonal
Application:	Western Blotting (WB), ELISA

Product Details

Purpose:	ABCB8 Antibody
Immunogen:	Immunogen: ABCB8 was prepared from whole rabbit serum produced by repeated immunizations with a synthetic peptide corresponding to a internal portion of human ABCB8. Immunogen Type: Conjugated Peptide
Isotype:	IgG
Characteristics:	Synonyms: Rabbit anti-ABCB8 antibody, ATP-binding cassette sub-family B member 8 mitochondrial, Mitochondrial ATP-binding cassette 1, M-ABC1, ABCB-8, ABCB
Purification:	Anti-ABCB8 Antibody was prepared from monospecific, delipidated and defibrinated antiserum, with addition of sodium azide to 0.01 % .
Sterility:	Sterile filtered

Target Details

Target:	ABCB8
Alternative Name:	ABCB8 (ABCB8 Products)
Background:	<p>Background: This antibody is designed, produced, and validated as part of a collaboration with the National Cancer Institute (NCI) and is suitable for Cancer Research and drug resistance.</p> <p>ABCB8 is designed, produced, and validated as part of a collaboration with the National Cancer Institute (NCI). It has been found that ABC transporters are involved in multidrug resistance through their ability to control the presence of drugs in cells. Multidrug resistance is currently being looked at in particular reference to cancer that is resistant to treatment. ABCB8 seems to have particularly high resistance rates in renal cancer and cancer of the central nervous system. Another significant aspect of ABCB8 is that it is a mitochondrial transporter. There are very few ABC transporters localized to the mitochondria which implies information about them could be extremely important. ABCB8 may also be localized to other parts of the cell which are yet to be determined. Anti-ABCB8 antibody is ideal for researchers interested in Cancer Research and drug resistance.</p>
Gene ID:	11194
NCBI Accession:	NP_009119
UniProt:	Q9NUT2

Application Details

Application Notes:	<p>Application Note: Anti-ABCB8 antibody has been tested by ELISA and western blotting. Specific conditions for reactivity should be optimized by the end user. Expect band approximately 79.9 kDa in size corresponding to ABCB8 by western blotting in the appropriate cell lysate or extract.</p> <p>Western Blot Dilution: 1:250-1:500</p> <p>ELISA Dilution: 1:20,000 - 1:50,000</p>
Restrictions:	For Research Use only

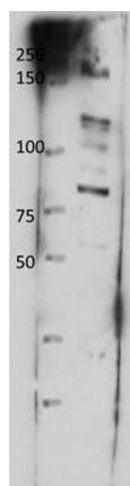
Handling

Format:	Liquid
Concentration:	80 mg/mL
Buffer:	<p>Buffer: 0.02 M Potassium Phosphate, 0.15 M Sodium Chloride, pH 7.2</p> <p>Stabilizer: None</p> <p>Preservative: 0.01 % (w/v) Sodium Azide</p>

Handling

Preservative:	Sodium azide
Precaution of Use:	This product contains Sodium azide: a POISONOUS AND HAZARDOUS SUBSTANCE which should be handled by trained staff only.
Storage:	4 °C,-20 °C
Storage Comment:	Store vial at -20° C prior to opening. Aliquot contents and freeze at -20° C or below for extended storage. Avoid cycles of freezing and thawing. Centrifuge product if not completely clear after standing at room temperature. This product is stable for several weeks at 4° C as an undiluted liquid. Dilute only prior to immediate use.
Expiry Date:	12 months

Images



Western Blotting

Image 1. Western Blot of Rabbit anti-ABCB8 antibody. Lane 1: crude membrane prep. Load: 10 µg per lane. Primary antibody: ABCB8 antibody at 1:500 for overnight at 4°C. Secondary antibody: rabbit secondary antibody at 1:10,000 for 45 min at RT. Block: 5% BLOTTO overnight at 4°C. Predicted/Observed size: 80 kDa for ABCB8.