

Datasheet for ABIN5596902
anti-ALG6 antibody (N-Term)



[Go to Product page](#)

2 Images

Overview

Quantity:	100 µL
Target:	ALG6
Binding Specificity:	N-Term
Reactivity:	Human
Host:	Rabbit
Clonality:	Polyclonal
Application:	Western Blotting (WB), ELISA, Immunohistochemistry (IHC)

Product Details

Purpose:	ALG6 Antibody
Immunogen:	<p>Immunogen: This whole rabbit serum was prepared by repeated immunizations with a synthetic peptide, corresponding to a region near the N-terminus of human ALG6 protein, conjugated to KLH.</p> <p>Immunogen Type: Conjugated Peptide</p>
Isotype:	IgG
Cross-Reactivity (Details):	ALG6 Antibody antiserum is directed against human ALG6. A 58 kDa band is detected when assayed by immunoblot.
Characteristics:	<p>Synonyms: rabbit anti-ALG6 Antibody, rabbit anti-ALG-6 Antibody, Dolichyl pyrophosphate Man9GlcNAc2 alpha-1,3-glucosyltransferase, Asparagine-linked glycosylation protein 6 homolog, Dol-P-Glc:Man(9)GlcNAc(2)-PP-Dol alpha-1,3-glucosyltransferase, Dolichyl-P-Glc:Man9GlcNAc2-PP-dolichyl glucosyltransferase, ALG6 Antibody, My046</p>

Product Details

Purification:	Antiserum
Sterility:	Sterile filtered

Target Details

Target:	ALG6
Alternative Name:	ALG6 (ALG6 Products)
Background:	<p>Background: Anti-ALG6 antibody was designed, produced, and validated as part of the Joy Cappel Young Investigator Award (JCYIA). Dolichyl pyrophosphate Man9GlcNAc2 alpha-1,3-glucosyltransferase is an enzyme that is encoded by the ALG6 gene in humans. This gene encodes ALG6/ALG8 member of glucosyltransferase family. The encoded protein catalyzes the addition of the first glucose residue to the growing lipid-linked oligosaccharide precursor of N-linked glycosylation. Mutations in this gene are associated with congenital disorders of glycosylation type. Anti-ALG6 is ideal for researchers interested in Infectious disease, especially HIV and hepatitis virus infections. Anti-ALG6 antibody is applicable to methods for diagnosis and, in particular, to methods for diagnosing infections using biomarkers targeting exosomes secreted in bodily fluids.</p>
UniProt:	Q9Y672

Application Details

Application Notes:	<p>Immunohistochemistry Dilution: 4 µg/mL</p> <p>Application Note: Anti-ALG6 antibody has been tested in ELISA, western blot, and immunohistochemistry. Specific conditions for reactivity should be optimized by the end user. Expect a band approximately 58 kDa in size corresponding to ALG6 protein by Western blotting in the appropriate cell lysate or extract.</p> <p>Western Blot Dilution: 1:1000</p> <p>ELISA Dilution: 1:45,000</p>
Restrictions:	For Research Use only

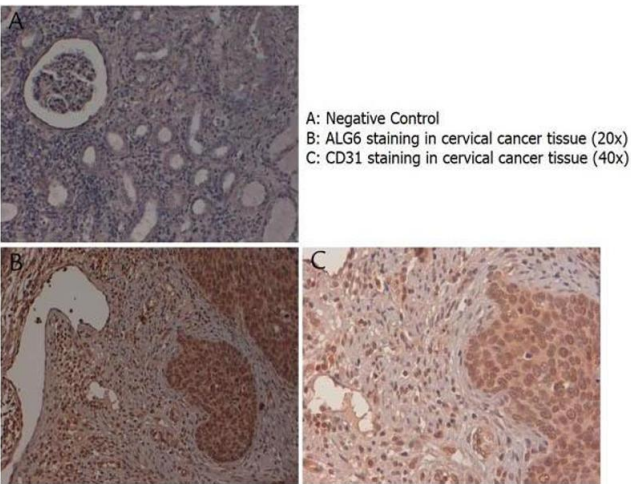
Handling

Format:	Liquid
Concentration:	80 mg/mL
Buffer:	Buffer: 0.02 M Potassium Phosphate, 0.15 M Sodium Chloride, pH 7.2

Handling

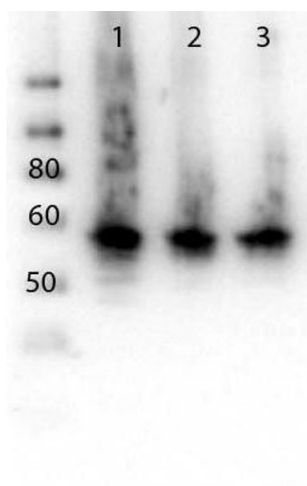
	Stabilizer: None
	Preservative: 0.01 % (w/v) Sodium Azide
Preservative:	Sodium azide
Precaution of Use:	This product contains Sodium azide: a POISONOUS AND HAZARDOUS SUBSTANCE which should be handled by trained staff only.
Storage:	4 °C,-20 °C
Storage Comment:	Store vial at -20° C prior to opening. Aliquot contents and freeze at -20° C or below for extended storage. Avoid cycles of freezing and thawing. Centrifuge product if not completely clear after standing at room temperature. This product is stable for several weeks at 4° C as an undiluted liquid. Dilute only prior to immediate use.
Expiry Date:	12 months

Images



Immunohistochemistry

Image 1. Immunohistochemistry with anti-ALG6 antibody showing ALG6 staining in the squamous epithelium of the uterine cervix as well as in inflammatory elements diffused in the stroma of human cervical cancer tissue at 20x and 40x (B & C). Formalin fixed/paraffin embedded sections were subjected to heat induced epitope retrieval (HIER) at pH 6.2 and then incubated with rabbit anti-human ALG6 antibody at 4.0 µg/ml for 60 minutes. The reaction was developed using MACH 1 universal HRP polymer detection system and visualized with 3’3-diamino-benzidine substrate (DAB).



Western Blotting

Image 2. Western Blot of Rabbit anti-ALG6 antibody. Lane 1: HeLa Whole Cell lysate. Lane 2: MOLT4 Whole Cell lysate. Lane 3: K-562 Whole Cell lysate. Load: 10 µg per lane. Primary antibody: ALG6 antibody at 1:500 for overnight at 4°C. Secondary antibody: Peroxidase rabbit secondary antibody at 1:40,000 for 30 min at RT. Block: TBS-Casein overnight at 4°C. Predicted/Observed size: 58 kDa ALG-6.