



[Go to Product page](#)

Datasheet for ABIN5596915

## anti-Sucrose Phosphorylase antibody (HRP)

### 1 Image

#### Overview

Quantity:	100 µg
Target:	Sucrose Phosphorylase
Reactivity:	E. coli
Host:	Goat
Clonality:	Polyclonal
Conjugate:	This Sucrose Phosphorylase antibody is conjugated to HRP
Application:	Western Blotting (WB), ELISA, Immunoprecipitation (IP)

#### Product Details

Immunogen:	Immunogen: Sucrose Phosphorylase [E.coli] Immunogen Type: Native Protein
Isotype:	IgG
Cross-Reactivity (Details):	Cross reactivity against Sucrose Phosphorylase from other sources is unknown.
Purification:	Sucrose Phosphorylase is an IgG fraction antibody purified from monospecific antiserum by a multi-step process which includes delipidation, salt fractionation and ion exchange chromatography followed by extensive dialysis against the buffer stated above. Assay by immunoelectrophoresis resulted in a single precipitin arc against anti-Peroxidase, anti-Goat Serum as well as purified and partially purified Sucrose Phosphorylase [E.coli].

#### Target Details

Target:	Sucrose Phosphorylase
---------	-----------------------

## Target Details

---

Abstract: [Sucrose Phosphorylase Products](#)

---

Background: Synonyms: Putative sucrose phosphorylase Sucrose glucosyltransferase  
Background: Sucrose Phosphorylase is an important enzyme in the metabolism of sucrose and regulation of other metabolic intermediates. Sucrose phosphorylase is in the class of hexosyltransferases. It has been shown in multiple experiments that the enzyme catalyzes this conversion by a double displacement mechanism.  
Gene Name: ycjM

---

Gene ID: 4492194

---

UniProt: [P76041](#)

---

## Application Details

---

Application Notes: Application Note: Anti-Sucrose Phosphorylase has been assayed against 1.0 µg of Sucrose Phosphorylase [E.coli] in a standard capture ELISA using ABTS (2,2'-azino-bis-[3-ethylbenzothiazoline-6-sulfonic acid]) code # ABTS-100 as a substrate for 30 minutes at room temperature. A working dilution of 1:1,000 to 1:5,000 of the reconstitution concentration is suggested for this product.  
Western Blot Dilution: 1:500 - 1:5,000  
Immunoprecipitation Dilution: 1:100  
ELISA Dilution: 1:5,000 - 1:20,000

---

Restrictions: For Research Use only

---

## Handling

---

Format: Lyophilized

---

Reconstitution: Reconstitution Volume: 100 µL  
Reconstitution Buffer: Restore with deionized water (or equivalent)

---

Concentration: 1 mg/mL

---

Buffer: Buffer: 0.02 M Potassium Phosphate, 0.15 M Sodium Chloride, pH 7.2  
Stabilizer: 10 mg/mL Bovine Serum Albumin (BSA) - Immunoglobulin and Protease free

---

Preservative: Gentamicin sulfate

---

Precaution of Use: This product contains Gentamicin sulfate: a POISONOUS AND HAZARDOUS SUBSTANCE which should be handled by trained staff only.

---

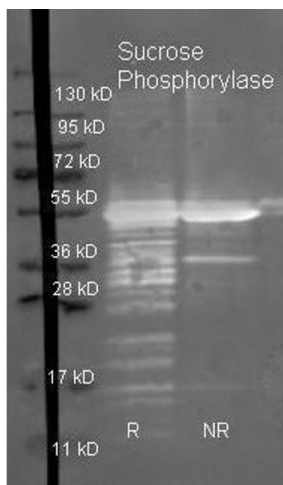
## Handling

Storage: 4 °C,-20 °C

Storage Comment: Store vial at 4° C prior to restoration. For extended storage aliquot contents and freeze at -20° C or below. Avoid cycles of freezing and thawing. Centrifuge product if not completely clear after standing at room temperature. This product is stable for several weeks at 4° C as an undiluted liquid. Dilute only prior to immediate use.

Expiry Date: 12 months

## Images



### Western Blotting

**Image 1.** Goat anti Sucrose Phosphorylase antibody was used to detect purified Sucrose Phosphorylase under reducing (R) and non-reducing (NR) conditions. Reduced samples of purified protein contained 4% BME and were boiled for 5 minutes. Samples of ~1ug of protein per lane were run by SDS-PAGE. Protein was transferred to nitrocellulose and probed with 1:3000 dilution of primary antibody (ON 4 C in ABIN925618). Detection shown was using Dylight 488 conjugated Donkey anti goat (605-741-125 lot 21094 1:10K in TBS/ABIN925618 1 hr RT). Images were collected using the BioRad VersaDoc System