

Datasheet for ABIN5596917
anti-Trypsin Inhibitor antibody (HRP)



[Go to Product page](#)

1 Image

Overview

Quantity:	100 µg
Target:	Trypsin Inhibitor
Reactivity:	Soybean
Host:	Rabbit
Clonality:	Polyclonal
Conjugate:	This Trypsin Inhibitor antibody is conjugated to HRP
Application:	Western Blotting (WB), ELISA

Product Details

Immunogen:	Anti-Trypsin Inhibitor was produced by repeated immunizations with soy bean trypsin inhibitor. Immunogen type: Native
Isotype:	IgG
Characteristics:	Concentration Definition: by UV absorbance at 280 nm

Target Details

Target:	Trypsin Inhibitor
Abstract:	Trypsin Inhibitor Products
Background:	Anti-Trypsin Inhibitor detects trypsin inhibitor from soy bean. Soybean trypsin inhibitor inhibits trypsin and to a lesser extent chymotrypsin and plasmin. Soybean trypsin inhibitor will also inhibit other proteases by a mechanism similar to trypsin. It has inhibitory effects towards plasma kallikrein and coagulation Factor Xa. However, Soybean trypsin inhibitor will not inhibit

Target Details

metalloproteases, tissue-based kallikrein, acid proteases, or thio proteases. Anti-Trypsin Inhibitor Antibody is ideal for investigators involved in Cell Signaling, Biochemistry and Signal Transduction research.

Gene ID: 547831

UniProt: [P01070](#)

Application Details

Application Notes: Anti-Trypsin Inhibitor antibody is suitable for western blotting, IHC and for ELISA. Researchers should determine optimal titers for applications that are not stated below.

ELISA Dilution: 1:10,000 - 1:40,000

Immunohistochemistry Dilution: 1:200 - 1:2,000

Western Blot Dilution: 1:5,000 - 1:20,000

Restrictions: For Research Use only

Handling

Format: Lyophilized

Reconstitution: Restore with deionized water (or equivalent)

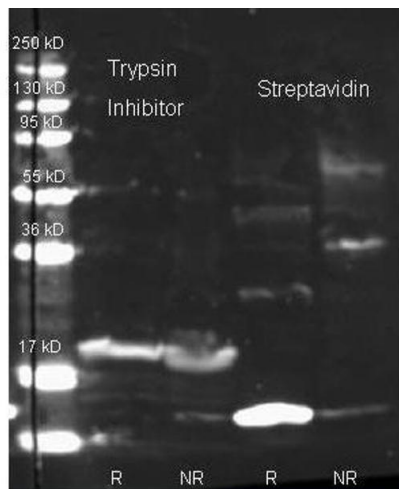
Concentration: 10.0 mg/mL

Buffer: 0.02 M Potassium Phosphate, 0.15 M Sodium Chloride, pH 7.2

Preservative: Gentamicin sulfate

Handling Advice: Do NOT add Sodium Azide!

Storage: 4 °C



Western Blotting

Image 1. Western Blot of Rabbit Anti Trypsin Inhibitor antibody. Lane 1: purified Soybean Trypsin Inhibitor Reduced. Lane 2: purified Soybean Trypsin Inhibitor Non-Reduced. Lane 3: purified Streptavidin Reduced. Lane 4: purified Streptavidin Non-Reduced. Load: 1.0 ug per lane. Primary antibody: Biotin conjugated Rabbit anti-trypsin inhibitor antibody and Rabbit anti streptavidin 1:1000 for overnight at 4°C. Secondary antibody: Dylight 649 conjugated Donkey anti rabbit at 1:10,000 for 45 min at RT. Block: 5% BLOTTO overnight at 4°C. Predicted/Observed size: 25 kDa for Trypsin Inhibitor.