

Datasheet for ABIN5596921

anti-SETDB2 antibody[Go to Product page](#)**1** Image

Overview

Quantity:	100 µg
Target:	SETDB2
Reactivity:	Human, Mouse, Rabbit
Host:	Rabbit
Clonality:	Polyclonal
Application:	Western Blotting (WB), ELISA

Product Details

Immunogen:	Immunogen: Setdb2 antibody was prepared from whole rabbit serum produced by repeated immunizations with a full length protein corresponding to mouse Setdb2. Immunogen Type: Recombinant Protein
Isotype:	IgG
Cross-Reactivity (Details):	Expect reactivity with Setdb2 from mouse and human sources. Reactivity against homologues from other sources is not known.
Purification:	This Protein A purified antibody is directed against mouse Setdb2. The product was purified from monospecific antiserum by Protein A affinity chromatography.

Target Details

Target:	SETDB2
Alternative Name:	Setdb2 (SETDB2 Products)
Background:	Synonyms: Histone-lysine N-methyltransferase SETDB2, SET domain bifurcated 2, Setdb2

Target Details

antibody, Gm293

Background: Setdb2 is designed, produced, and validated as part of a collaboration between Rockland and the National Cancer Institute (NCI). Setdb2 and the neighboring gene Phf11 were linked to familial atopy/ asthma and are in a "critical region" commonly deleted in CLL. Setdb2 is a candidate histone methyltransferase as a member of the Su(var) 3-9 family of SET domain-containing enzymes. Other predicted domains in Setdb2 include a methylcytosine binding domain and a large bifurcation domain interrupting the putative histone methyltransferase (SET) domain whose function is unknown. Anti-Setdb2 antibody is ideal for researchers interested in Cancer Research and Epigenetics Research.

Gene Name: Setdb2

Application Details

Application Notes:	Application Note: Anti-Setdb2 antibody has been tested for use in ELISA and western blotting. Specific conditions for reactivity should be optimized by the end user. Expect a band approximately 80.6 kDa in size corresponding to Setdb2 by western blotting in the appropriate cell lysate or extract. Western Blot Dilution: 1:10,000 - 1:100,000 ELISA Dilution: 1:2,500 - 1:10,000
--------------------	--

Restrictions:	For Research Use only
---------------	-----------------------

Handling

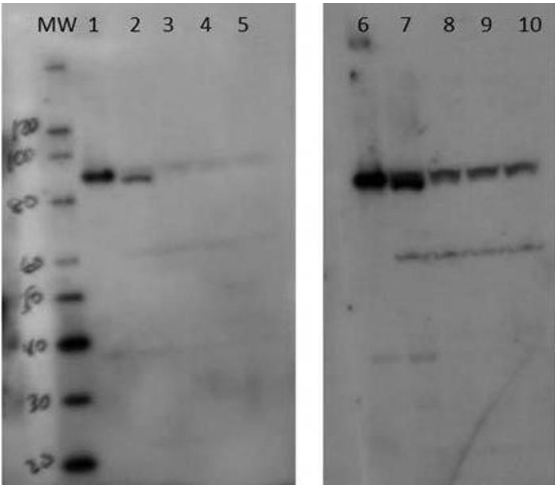
Format:	Liquid
Concentration:	0.98 mg/mL
Buffer:	Buffer: 0.02 M Potassium Phosphate, 0.15 M Sodium Chloride, pH 7.2 Stabilizer: None
Preservative:	Sodium azide
Precaution of Use:	This product contains Sodium azide: a POISONOUS AND HAZARDOUS SUBSTANCE which should be handled by trained staff only.
Storage:	4 °C, -20 °C
Storage Comment:	Store vial at -20° C prior to opening. Aliquot contents and freeze at -20° C or below for extended storage. Avoid cycles of freezing and thawing. Centrifuge product if not completely clear after standing at room temperature. This product is stable for several weeks at 4° C as an undiluted

Handling

liquid. Dilute only prior to immediate use.

Expiry Date: 12 months

Images



Western Blotting

Image 1. Western Blot of Rabbit anti-Setdb2 antibody. Lane 1: 50ng recombinant mouse Setdb2. Lane 2: 50ng recombinant mouse Setdb2 + HEK293 50mcg. Lane 3: 5.0ng recombinant mouse Setdb2 + HEK293 50mcg. Lane 4: 0.5ng recombinant mouse Setdb2 + HEK293 50mcg. Lane 5: HEK293 50mcg. Lane 6: 50ng recombinant mouse Setdb2. Lane 7: 50ng recombinant mouse Setdb2 + HEK293 50mcg. Lane 8: 5.0ng recombinant mouse Setdb2 + HEK293 50mcg. Lane 9: 0.5ng recombinant mouse Setdb2 + HEK293 50mcg. Lane 10: HEK293 50mcg. Primary antibody: Setdb2 antibody at 1:100,000 (lanes 1-5) and 1:25,000 (lanes 6-10) for overnight at 4°C. Secondary antibody: HRP rabbit secondary antibody at 1:20,000 for 45 min at RT. Block: 5% BLOTTO overnight at 4°C. Predicted/Observed size: 80.6 kDa for Setdb2. Other band(s): degradation products, proteolysis products, or nonspecific binding.