

Datasheet for ABIN5596934

anti-Lactate Dehydrogenase antibody (HRP)[Go to Product page](#)**2** Images

Overview

Quantity:	100 µg
Target:	Lactate Dehydrogenase (LDH)
Reactivity:	Rabbit
Host:	Goat
Clonality:	Polyclonal
Conjugate:	This Lactate Dehydrogenase antibody is conjugated to HRP
Application:	Western Blotting (WB), ELISA

Product Details

Immunogen:	Anti-Lactate Dehydrogenase Antibody was produced by repeated immunizations with rabbit muscle Lactate Dehydrogenase full length protein. Immunogen type: Native
Isotype:	IgG
Characteristics:	Concentration Definition: by UV absorbance at 280 nm

Target Details

Target:	Lactate Dehydrogenase (LDH)
Alternative Name:	Lactate Dehydrogenase (LDH Products)
Background:	Anti-Lactate Dehydrogenase Antibody detects Lactate Dehydrogenase. Lactate dehydrogenases exist in four distinct enzyme classes. Two of them are cytochrome c-dependent enzymes, each acting on either D-lactate or L-lactate. The other two are NAD(P)-

Target Details

dependent enzymes, each acting on either D-lactate or L-lactate. Lactate dehydrogenase catalyzes the interconversion of pyruvate and lactate. Anti-Lactate Dehydrogenase Antibody is ideal for investigators involved in Cell Signaling, Immunology, Neuroscience and Signal Transduction research.

Gene ID: 100009107

UniProt: [P13491](#)

Application Details

Application Notes: Anti-Lactate Dehydrogenase Antibody is suitable for western blotting, IP, IHC and for ELISA. Researchers should determine optimal titers for applications that are not stated below.
ELISA Dilution: 1:3,000 - 1:12,000
Immunohistochemistry Dilution: 1:500 - 1:2,500
Immunoprecipitation Dilution: 1:100
Western Blot Dilution: 1:1,000 - 1:6,000

Restrictions: For Research Use only

Handling

Format: Lyophilized

Reconstitution: Restore with deionized water (or equivalent)

Concentration: 10.0 mg/mL

Buffer: 0.02 M Potassium Phosphate, 0.15 M Sodium Chloride, pH 7.2

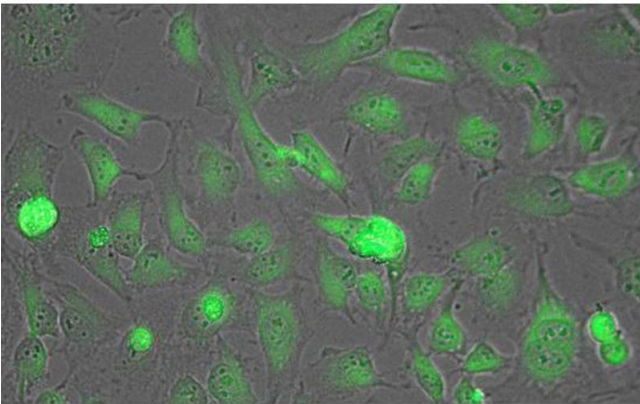
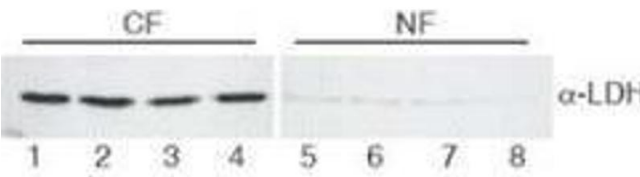
Preservative: Gentamicin sulfate

Handling Advice: Do NOT add Sodium Azide!

Storage: 4 °C

Western Blotting

Image 1.



Immunofluorescence

Image 2. Immunofluorescence Microscopy of Biotin conjugated Anti-Lactate Dehydrogenase Antibody. Tissue: HeLa cells. Fixation: fixed for 5 min in 1:1 MeTOH:Acetone, blocked with MB-071 (preservative free) for 15 min. Antigen retrieval: not required. Primary antibody: Lactate Dehydrogenase antibody at 1:200 for 1 h at RT. Secondary antibody: DyLight 488 conjugated Streptavidin antibody at 1:10,000 for 30 min at RT. Staining: Lactate Dehydrogenase as green fluorescent signal.