

Datasheet for ABIN5596949

anti-MST1R antibody (Internal Region, pTyr1353)[Go to Product page](#)**1** Image

Overview

Quantity:	100 µg
Target:	MST1R
Binding Specificity:	Internal Region, pTyr1353
Reactivity:	Human
Host:	Rabbit
Clonality:	Polyclonal
Application:	Western Blotting (WB), ELISA

Product Details

Immunogen:	Immunogen: Anti-RON pY1353 Antibody was produced in rabbits by repeated immunizations with a synthetic peptide corresponding to residues surrounding Y1353 of human RON protein. Immunogen Type: Peptide
Isotype:	IgG
Cross-Reactivity (Details):	Cross-reactivity against RON from other species may occur but has not yet been tested.
Purification:	Anti-RON pY1353 was prepared from monospecific antiserum by immunoaffinity chromatography using phospho peptide coupled to agarose beads followed by solid phase adsorptions against non-phospho peptide and non-specific peptide to remove any unwanted reactivities. Assay by immunoelectrophoresis resulted in a single precipitin arc against anti-Rabbit Serum. This antibody is specific for human RON protein phosphorylated at Y1353.

Target Details

Target:	MST1R
Alternative Name:	RON (MST1R Products)
Background:	<p>Synonyms: Macrophage-stimulating protein receptor, p185-Ron, PTK8, RON, Protein-tyrosine kinase 8, c-met-related tyrosine kinase</p> <p>Background: RON pY1353 antibody detects phosphorylated RON. RON is a member of the protein kinase superfamily. Protein kinases mediate most of the signal transduction in eukaryotic cells, regulating cellular metabolism, transcription, cell cycle progression, cytoskeletal rearrangement and cell movement, apoptosis, and differentiation. RON is a heterodimer composed of an α chain and a β chain. The α chain is completely extracellular, whereas the β chain traverses the cell membrane and contains the intracellular tyrosine kinase and regulatory elements. Anti-RON Antibody is ideal for investigators involved in Cell Signaling, Cancer, Neuroscience and Signal Transduction research.</p> <p>Gene Name: MST1R</p>
Gene ID:	4486
UniProt:	Q04912
Pathways:	RTK Signaling

Application Details

Application Notes:	<p>Application Note: Anti-RONpY1353 Antibody has been tested for use in ELISA and by western blot. Specific conditions for reactivity should be optimized by the end user. Expect a predominant band at ~ 152.3 kDa corresponding to full length protein by western blotting in the appropriate cell lysate or extract. This phospho-specific polyclonal antibody reacts with human RON pY1353 and shows minimal reactivity by ELISA against the non-phosphorylated form of the immunizing peptide.</p> <p>Western Blot Dilution: 1:500-1:2000</p> <p>ELISA Dilution: 1:2,000 - 1:10,000</p>
Restrictions:	For Research Use only

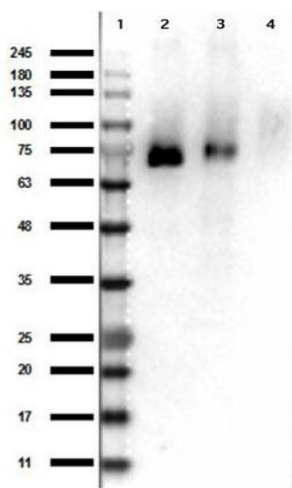
Handling

Format:	Liquid
Concentration:	1.0 mg/mL
Buffer:	Buffer: 0.02 M Potassium Phosphate, 0.15 M Sodium Chloride, pH 7.2

Handling

	Stabilizer: None
Preservative:	Sodium azide
Precaution of Use:	This product contains Sodium azide: a POISONOUS AND HAZARDOUS SUBSTANCE which should be handled by trained staff only.
Storage:	4 °C,-20 °C
Storage Comment:	Store vial at -20° C prior to opening. Aliquot contents and freeze at -20° C or below for extended storage. Avoid cycles of freezing and thawing. Centrifuge product if not completely clear after standing at room temperature. This product is stable for several weeks at 4° C as an undiluted liquid. Dilute only prior to immediate use.
Expiry Date:	12 months

Images



Western Blotting

Image 1. Western Blot Results of Rabbit Anti-RONpY1353 Antibody. Lane 1: Opal Prestained Ladder - MB-210-0500. Lane 2: rRON-GST. Lane 3: rPhospho-RON-GST. Lane 4: GST alone. Load: 50ng. Primary Antibody: Anti-RONpY1353 at 1ug/mL overnight at 4°C. Secondary Antibody: Goat anti-Rabbit HRP conjugated - 611-103-122 at 1:70,000. Block: ABIN925618 Buffer for 30min at RT.