

Datasheet for ABIN5596950

anti-MST1R antibody (Internal Region, pTyr1360)[Go to Product page](#)**1** Image

Overview

| | |
|----------------------|------------------------------|
| Quantity: | 100 µg |
| Target: | MST1R |
| Binding Specificity: | Internal Region, pTyr1360 |
| Reactivity: | Human |
| Host: | Rabbit |
| Clonality: | Polyclonal |
| Application: | Western Blotting (WB), ELISA |

Product Details

| | |
|-----------------------------|---|
| Immunogen: | Immunogen: Anti-RON pY1360 Antibody was produced in rabbits by repeated immunizations with a synthetic peptide corresponding to residues surrounding Y1360 of human RON protein. Immunogen Type: Peptide |
| Isotype: | IgG |
| Cross-Reactivity (Details): | Cross-reactivity against RON from other species may occur but has not yet been tested. |
| Purification: | Anti-RON pY1360 was prepared from monospecific antiserum by immunoaffinity chromatography using phospho peptide coupled to agarose beads followed by solid phase adsorptions against non-phospho peptide and non-specific peptide to remove any unwanted reactivities. Assay by immunoelectrophoresis resulted in a single precipitin arc against anti-Rabbit Serum. This antibody is specific for human RON protein phosphorylated at Y1360. |

Target Details

| | |
|-------------------|---|
| Target: | MST1R |
| Alternative Name: | RON (MST1R Products) |
| Background: | <p>Synonyms: Macrophage-stimulating protein receptor, p185-Ron, PTK8, RON, Protein-tyrosine kinase 8, c-met-related tyrosine kinase</p> <p>Background: RON pY1360 antibody detects phosphorylated RON. RON is a member of the protein kinase superfamily. Protein kinases mediate most of the signal transduction in eukaryotic cells, regulating cellular metabolism, transcription, cell cycle progression, cytoskeletal rearrangement and cell movement, apoptosis, and differentiation. RON is a heterodimer composed of an α chain and a β chain. The α chain is completely extracellular, whereas the β chain traverses the cell membrane and contains the intracellular tyrosine kinase and regulatory elements. Anti-RON Antibody is ideal for investigators involved in Cell Signaling, Cancer, Neuroscience and Signal Transduction research.</p> <p>Gene Name: MST1R</p> |
| Gene ID: | 4486 |
| UniProt: | Q04912 |
| Pathways: | RTK Signaling |

Application Details

| | |
|--------------------|--|
| Application Notes: | <p>Application Note: Anti-RONpY1360 Antibody has been tested for use in ELISA and by western blot. Specific conditions for reactivity should be optimized by the end user. Expect a predominant band at ~ 152.3 kDa corresponding to full length protein by western blotting in the appropriate cell lysate or extract. This phospho-specific polyclonal antibody reacts with human RON pY1360 and shows minimal reactivity by ELISA against the non-phosphorylated form of the immunizing peptide.</p> <p>Western Blot Dilution: 1:500-1:2000</p> <p>ELISA Dilution: 1:2,000 - 1:10,000</p> |
| Restrictions: | For Research Use only |

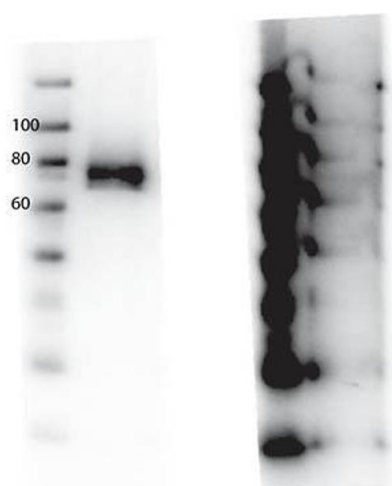
Handling

| | |
|----------------|--|
| Format: | Liquid |
| Concentration: | 0.79 mg/mL |
| Buffer: | Buffer: 0.02 M Potassium Phosphate, 0.15 M Sodium Chloride, pH 7.2 |

Handling

| | |
|--------------------|---|
| | Stabilizer: None |
| Preservative: | Sodium azide |
| Precaution of Use: | This product contains Sodium azide: a POISONOUS AND HAZARDOUS SUBSTANCE which should be handled by trained staff only. |
| Storage: | 4 °C, -20 °C |
| Storage Comment: | Store vial at -20° C prior to opening. Aliquot contents and freeze at -20° C or below for extended storage. Avoid cycles of freezing and thawing. Centrifuge product if not completely clear after standing at room temperature. This product is stable for several weeks at 4° C as an undiluted liquid. Dilute only prior to immediate use. |
| Expiry Date: | 12 months |

Images



Western Blotting

Image 1. Western Blot of Rabbit anti-RONpY1360 antibody. Lane 1: Phospho RON rProtein (cytoplasmic domain). Lane 2: Phospho RON rProtein (cytoplasmic domain) incubated with RONpY1360 peptide. Load: 0.05 µg per lane. Primary antibody: RON pY1360 antibody at 1µg for overnight at 4°C. Secondary antibody: HRP Goat anti-rabbit IgG secondary antibody at 1:40,000 for 45 min at RT. Block: ABIN925618 Fluorescent blocking buffer overnight at 4°C. Predicted/Observed size: 152 kDa (full length) / ~75 kDa (cytoplasmic domain) RON pY1360. Other band(s): none.