



[Go to Product page](#)

Datasheet for ABIN5596955

anti-Maltose Phosphorylase antibody (HRP)

1 Image

Overview

Quantity:	100 µg
Target:	Maltose Phosphorylase
Reactivity:	E. coli, Bacteria
Host:	Goat
Clonality:	Polyclonal
Conjugate:	This Maltose Phosphorylase antibody is conjugated to HRP
Application:	Western Blotting (WB), Immunoprecipitation (IP), ELISA

Product Details

Immunogen:	Immunogen: Maltose Phosphorylase [E.coli] Immunogen Type: Native Protein
Isotype:	IgG
Cross-Reactivity (Details):	Cross reactivity against Maltose Phosphorylase from other sources is unknown.
Purification:	Maltose Phosphorylase is an IgG fraction antibody purified from monospecific antiserum by a multi-step process which includes delipidation, salt fractionation and ion exchange chromatography followed by extensive dialysis against the buffer stated above. Assay by immunoelectrophoresis resulted in a single precipitin arc against anti-Peroxidase, anti-Goat Serum as well as purified and partially purified Maltose Phosphorylase [E.coli].

Target Details

Target:	Maltose Phosphorylase
---------	-----------------------

Target Details

Abstract: [Maltose Phosphorylase Products](#)

Background: Synonyms: mapA antibody, mpA antibody
Background: Maltose Phosphorylase belongs to the family of glycosyltransferases, specifically the hexosyltransferases. The systematic name of this enzyme class is maltose:phosphate 1-beta-D-glucosyltransferase. This enzyme participates in starch and sucrose metabolism. Two substrates of this enzyme are maltose and phosphate, whereas its two products are D-glucose and beta-D-glucose 1-phosphate.
Gene Name: LAF

Gene ID: 6233598

UniProt: [B2GEX2](#)

Application Details

Application Notes: Application Note: Anti-Maltose Phosphorylase has a working dilution of 1:2,000 to 1:10,000 of the reconstitution concentration is suggested for this product.

Western Blot Dilution: 1:500 - 1:5,000

Immunoprecipitation Dilution: 1:100

ELISA Dilution: 1:5,000 - 1:20,000

Restrictions: For Research Use only

Handling

Format: Lyophilized

Reconstitution: Reconstitution Volume: 100 μ L

Reconstitution Buffer: Restore with deionized water (or equivalent)

Concentration: 1 mg/mL

Buffer: Buffer: 0.02 M Potassium Phosphate, 0.15 M Sodium Chloride, pH 7.2

Stabilizer: 10 mg/mL Bovine Serum Albumin (BSA) - Immunoglobulin and Protease free

Preservative: Gentamicin sulfate

Precaution of Use: This product contains Gentamicin sulfate: a POISONOUS AND HAZARDOUS SUBSTANCE which should be handled by trained staff only.

Storage: 4 °C,-20 °C

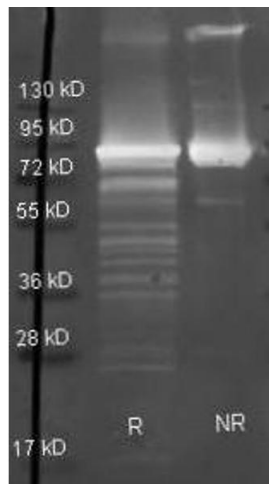
Storage Comment: Store vial at 4° C prior to restoration. For extended storage aliquot contents and freeze at -20° C

Handling

or below. Avoid cycles of freezing and thawing. Centrifuge product if not completely clear after standing at room temperature. This product is stable for several weeks at 4° C as an undiluted liquid. Dilute only prior to immediate use.

Expiry Date: 12 months

Images



Western Blotting

Image 1. Goat anti Maltose Phosphorylase antibody was used to detect Maltose Phosphorylase under reducing (R) and non-reducing (NR) conditions. Reduced samples of purified target proteins contained 4% BME and were boiled for 5 minutes. Samples of ~1ug of protein per lane were run by SDS-PAGE. Protein was transferred to nitrocellulose and probed with 1:3000 dilution of primary antibody (ON 4 C in ABIN925618). Detection shown was using Dylight 488 conjugated Donkey anti goat (605-741-125 lot 21094 1:10K in TBS/ABIN925618 1 hr RT). Images were collected using the BioRad VersaDoc System