



[Go to Product page](#)

Datasheet for ABIN5596971

## anti-Protein A antibody (Texas Red (TR))

### 1 Image

#### Overview

Quantity:	100 µg
Target:	Protein A
Reactivity:	Staphylococcus aureus
Host:	Goat
Clonality:	Polyclonal
Conjugate:	This Protein A antibody is conjugated to Texas Red (TR)
Application:	Flow Cytometry (FACS), Fluorescence Microscopy (FM)

#### Product Details

Immunogen:	Immunogen: Protein A [Staphylococcus aureus] Immunogen Type: Native Protein
Isotype:	IgG
Purification:	Anti-Protein A is an IgG fraction antibody purified from monospecific antiserum by a multi-step process which includes delipidation, salt fractionation and ion exchange chromatography followed by extensive dialysis against the buffer stated above. Assay by immunoelectrophoresis resulted in a single precipitin arc against purified and partially purified Protein A [Staphylococcus aureus], anti-Goat IgG and anti-Goat Serum.
Labeling Ratio:	1.5

#### Target Details

Target:	Protein A
---------	-----------

## Target Details

---

Abstract: [Protein A Products](#)

---

Background: Synonyms: Texas Red™, Protein A Texas Red™ Antibody  
Background: Anti-Protein A Texas Red is designed for immunofluorescence microscopy, fluorescence based plate assays (FLISA) and fluorescent western blotting. This product is also suitable for multiplex analysis, including multicolor imaging, utilizing various commercial platforms.

## Application Details

---

Application Notes: Flow Cytometry Dilution: User Optimized  
Application Note: Anti-Protein A Texa Red Conjugated Antibody is suitable for immunomicroscopy and flow cytometry or FACS analysis as well as other antibody based fluorescent assays requiring lot-to-lot consistency.  
IF Microscopy Dilution: 1:500 - 1:2,500

---

Restrictions: For Research Use only

---

## Handling

---

Format: Lyophilized

---

Reconstitution: Reconstitution Volume: 100 µL  
Reconstitution Buffer: Restore with deionized water (or equivalent)

---

Concentration: 1.0 mg/mL

---

Buffer: Buffer: 0.02 M Potassium Phosphate, 0.15 M Sodium Chloride, pH 7.2  
Stabilizer: 10 mg/mL Bovine Serum Albumin (BSA) - Immunoglobulin and Protease free

---

Preservative: Sodium azide

---

Precaution of Use: This product contains Sodium azide: a POISONOUS AND HAZARDOUS SUBSTANCE which should be handled by trained staff only.

---

Storage: 4 °C, -20 °C

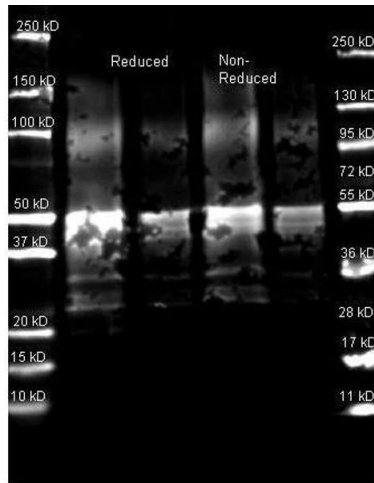
---

Storage Comment: Store vial at 4° C prior to restoration. For extended storage aliquot contents and freeze at -20° C or below. Avoid cycles of freezing and thawing. Centrifuge product if not completely clear after standing at room temperature. This product is stable for several weeks at 4° C as an undiluted liquid. Dilute only prior to immediate use.

---

Expiry Date: 12 months

---



### Western Blotting

**Image 1.** Western Blot of Goat anti-Protein A Antibody. Lane 1: Protein A Reduced. Lane 2: Protein A Reduced. Lane 3: Protein A Non-Reduced. Lane 4: Protein A Non-Reduced. Load: Lane 1 and 3 - 1.0 µg per lane, Lane 2 and 4 - 0.25 µg per lane. Primary antibody: Protein A antibody at 1:5,000 for overnight at 4°C. Secondary antibody: 649 goat secondary antibody at 1:10,000 for 90 min at RT. Block: 5% BLOTTO overnight at 4°C. Predicted/Observed size: ~50 kDa for Protein A. Other band(s): Protein A splice variants and isoforms.