

Datasheet for ABIN5596978
anti-RNASE1 antibody (HRP)[Go to Product page](#)

1 Image

Overview

Quantity:	100 µg
Target:	RNASE1
Reactivity:	Cow
Host:	Rabbit
Clonality:	Polyclonal
Conjugate:	This RNASE1 antibody is conjugated to HRP
Application:	Western Blotting (WB), ELISA, Immunoprecipitation (IP)

Product Details

Immunogen:	Immunogen: Ribonuclease A [Bovine Pancreas] Immunogen Type: Native Protein
Isotype:	IgG
Cross-Reactivity (Details):	Cross reactivity against Ribonuclease A from other tissues and species may occur but have not been specifically determined.
Purification:	Ribonuclease A is an IgG fraction antibody purified from monospecific antiserum by a multi-step process which includes delipidation, salt fractionation and ion exchange chromatography followed by extensive dialysis against the buffer stated above. Assay by immunoelectrophoresis resulted in a single precipitin arc against anti-Peroxidase, anti-Rabbit Serum as well as purified and partially purified Ribonuclease A [Bovine Pancreas].

Target Details

Target:	RNASE1
Alternative Name:	Ribonuclease A (RNASE1 Products)
Background:	<p>Synonyms: Pancreatic ribonuclease antibody, Rib 1 antibody, Rib1 antibody, Ribonuclease a family 1 antibody, Ribonuclease pancreatic antibody, Ribonuclease RNase A family 1 antibody, Ribonuclease RNase A family 1 pancreatic antibody</p> <p>Background: Ribonuclease A is a pancreatic ribonuclease that cleaves single-stranded RNA. Bovine pancreatic RNase A is one of the classic model systems of protein science. RNase A cleaves specifically after pyrimidine nucleotides. It can be inhibited by ribonuclease inhibitor protein, by heavy metal ions, and by uridine-vanadate complexes. RNase A, and to a greater extent its oligomers and some homologs, have cytotoxic and cytostatic effects, particularly on cancer cells.</p> <p>Gene Name: RNASE1</p>
Gene ID:	282340
UniProt:	P61823

Application Details

Application Notes:	<p>Application Note: Anti-Ribonuclease A has been assayed against 1.0 µg of Ribonuclease A [Bovine Pancreas] in a standard capture ELISA using ABTS (2,2'-azino-bis-[3-ethylbenthiazoline-6-sulfonic acid]) code # ABTS-100 as a substrate for 30 minutes at room temperature. A working dilution of 1:1,000 to 1:5,000 of the reconstitution concentration is suggested for this product.</p> <p>Western Blot Dilution: 1:500 - 1:2,500</p> <p>Immunoprecipitation Dilution: 1:100</p> <p>ELISA Dilution: 1:10,000 - 1:40,000</p>
Restrictions:	For Research Use only

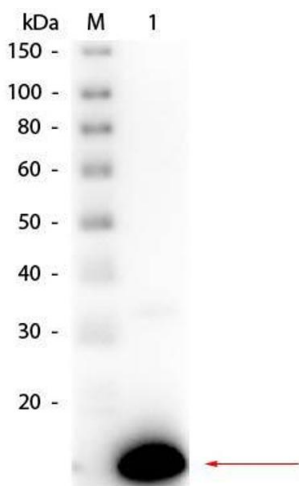
Handling

Format:	Lyophilized
Reconstitution:	<p>Reconstitution Volume: 100 µL</p> <p>Reconstitution Buffer: Restore with deionized water (or equivalent)</p>
Concentration:	1.0 mg/mL
Buffer:	Buffer: 0.02 M Potassium Phosphate, 0.15 M Sodium Chloride, pH 7.2

Handling

	Stabilizer: 10 mg/mL Bovine Serum Albumin (BSA) - Immunoglobulin and Protease free
Preservative:	Gentamicin sulfate
Precaution of Use:	This product contains Gentamicin sulfate: a POISONOUS AND HAZARDOUS SUBSTANCE which should be handled by trained staff only.
Storage:	4 °C,-20 °C
Storage Comment:	Store vial at 4° C prior to restoration. For extended storage aliquot contents and freeze at -20° C or below. Avoid cycles of freezing and thawing. Centrifuge product if not completely clear after standing at room temperature. This product is stable for several weeks at 4° C as an undiluted liquid. Dilute only prior to immediate use.
Expiry Date:	12 months

Images



Western Blotting

Image 1. Western Blot of Rabbit anti-Ribonuclease A Antibody Peroxidase Conjugated. Lane 1: Ribonuclease A (Bovine Pancreas). Load: 50 ng per lane. Primary antibody: Rabbit anti-Ribonuclease A Antibody Peroxidase Conjugated at 1:1,000 overnight at 4°C. Secondary antibody: n/a. Block: ABIN925618 for 30 min at RT. Predicted/Observed size: 16.5 kDa, 16.5 kDa for Ribonuclease A.