

Datasheet for ABIN5596979
anti-TET2 antibody (N-Term)[Go to Product page](#)

1 Image

Overview

Quantity:	100 µL
Target:	TET2
Binding Specificity:	N-Term
Reactivity:	Human
Host:	Rabbit
Clonality:	Polyclonal
Conjugate:	This TET2 antibody is un-conjugated
Application:	Western Blotting (WB), ELISA

Product Details

Immunogen:	Immunogen: TET2 antibody was prepared from whole rabbit serum produced by repeated immunizations with a human TET-2 domain containing the N-terminal 156 amino acids of the protein. Immunogen Type: Recombinant Protein
Cross-Reactivity (Details):	It is directed against, and shows specific reactivity for human Tet2 protein. Cross reactivity with Tet1 and Tet3 has not been determined.
Purification:	Anti-TET2 Antibody was prepared from whole rabbit antiserum by delipidation and defibrination. The antiserum was further cross-absorbed against MBP by chromatography.

Target Details

Target:	TET2
---------	------

Target Details

Alternative Name: TET2 ([TET2 Products](#))

Background: Synonyms: Tet2 antibody, Methylcytosine dioxygenase TET2, KIAA1546 antibody, myeloproliferative disorder antibody, MPD antibody, hematopoietic cell antibody, TET2 antibody, Tet oncogene 2 antibody, MDS antibody, TET2_HUMAN antibody

Background: Tet2 antibody is a dioxygenase enzyme which is associated with the addition of the hydroxyl group to 5-methylcytosine (5mC) to form 5-hydroxymethylcytosine. Tet2 mediates the formation of 5-formylcytosine from 5hmC and subsequently 5fC to 5-carboxylcytosine, and consequently Tet2 plays an active role in catalyzing those conversions which have been suggested as the first step for active mammalian DNA de-methylation. Tet2 enzyme aids in the epigenetic modification of mammalian cytosine bases, ultimately affecting transcriptional regulation. Additionally methylcytosine dioxygenase Tet2 recruits O-GlcNAc transferase OGT enzyme to CpG-rich transcription start sites of the gene, encouraging H2B GlcNAcylation by OGT. Anti-TET2 antibodies are ideal for researchers interested in Epigenetics, Cancer, Chromatin Research and Histone research.

Gene Name: TET2

Gene ID: 54790

UniProt: [Q6N021](#)

Pathways: [Warburg Effect](#)

Application Details

Application Notes: Application Note: Tet2 antibody has been tested for use by ELISA and Western Blot. Specific conditions for reactivity should be optimized by the end user. Expect band at ~230 kDa and ~150 kDa (isoforms).

Western Blot Dilution: 1:5000

ELISA Dilution: 1:50,000

Restrictions: For Research Use only

Handling

Format: Liquid

Concentration: 72.50 mg/mL

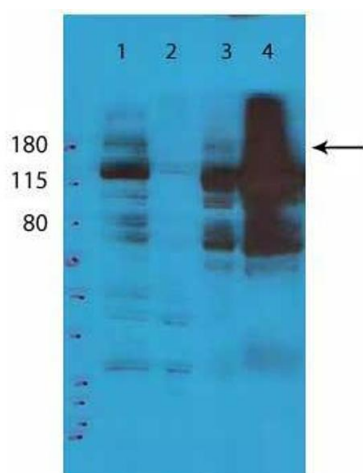
Buffer: Buffer: 0.02 M Potassium Phosphate, 0.15 M Sodium Chloride, pH 7.2

Stabilizer: None

Handling

Preservative:	Sodium azide
Precaution of Use:	This product contains Sodium azide: a POISONOUS AND HAZARDOUS SUBSTANCE which should be handled by trained staff only.
Storage:	4 °C,-20 °C
Storage Comment:	Store vial at -20° C prior to opening. Aliquot contents and freeze at -20° C or below for extended storage. Avoid cycles of freezing and thawing. Centrifuge product if not completely clear after standing at room temperature. This product is stable for several weeks at 4° C as an undiluted liquid. Dilute only prior to immediate use.
Expiry Date:	12 months

Images



Western Blotting

Image 1. Western Blot of Rabbit Anti-Tet2 Antibody. Lane 1: Whole Cell Extract. Lane 2: Cytosolic Extract. Lane 3: Nuclear Extract. Lane 4: Chromatin Fraction. Load: 35 µg per lane. Primary antibody: TET2 antibody at 1:5000 for 5 hours at room temperature. Secondary antibody: HRP rabbit secondary antibody at 1:10,000 for 45 min at RT. Block: 5% BLOTTO overnight at 4°C. Predicted/Observed size: ~230 and ~150kDa. Other band(s): nonspecific.