

Datasheet for ABIN5596985
anti-GLN1 antibody (HRP)[Go to Product page](#)

1 Image

Overview

Quantity:	100 µg
Target:	GLN1
Reactivity:	Bacteria
Host:	Goat
Clonality:	Polyclonal
Conjugate:	This GLN1 antibody is conjugated to HRP
Application:	Western Blotting (WB), Immunoprecipitation (IP), ELISA

Product Details

Immunogen:	Glutamine Synthetase [Microbial] Immunogen type: Native
Isotype:	IgG
Characteristics:	Concentration Definition: by UV absorbance at 280 nm

Target Details

Target:	GLN1
Alternative Name:	Glutamine Synthetase (GLN1 Products)
Gene ID:	3345165
UniProt:	Q79VE3
Pathways:	Positive Regulation of Peptide Hormone Secretion

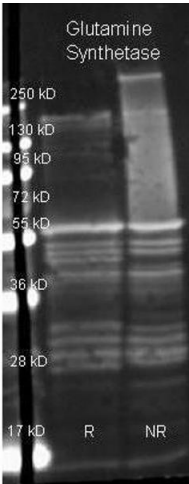
Application Details

Application Notes:	<p>This product has been assayed against 1.0 µg of Glutamine Synthetase [Microbial] in a standard capture ELISA using ABTS (2,2'-azino-bis-[3-ethylbenthiazoline-6-sulfonic acid]) as a substrate for 30 minutes at room temperature. A working dilution of 1:1,000 of the reconstitution concentration is suggested for this product.</p> <p>ELISA Dilution: 1:5,000 - 1:20,000 Immunoprecipitation Dilution: 1:100</p> <p>Western Blot Dilution: 1:500 - 1:5,000</p>
Restrictions:	For Research Use only

Handling

Format:	Lyophilized
Reconstitution:	Restore with deionized water (or equivalent)
Concentration:	10.0 mg/mL
Buffer:	0.02 M Potassium Phosphate, 0.15 M Sodium Chloride, pH 7.2
Preservative:	Gentamicin sulfate
Handling Advice:	Do NOT add Sodium Azide!
Storage:	4 °C

Images



Western Blotting

Image 1. Goat anti Glutamine Synthetase antibody (was used to detect Glutamine Synthetase under reducing (R) and non-reducing (NR) conditions. Reduced samples of purified target proteins contained 4% BME and were boiled for 5 minutes. Samples of ~1µg of protein per lane were run by SDS-PAGE. Protein was transferred to nitrocellulose and probed with 1:3000 dilution of primary antibody (ON 4 C in MB-070). Detection shown was using Dylight 649 conjugated Donkey anti goat (1:10K in TBS/MB-070) 1 hr RT..