



[Go to Product page](#)

Datasheet for ABIN559838
anti-ALAD antibody (AA 241-338)

1 Image

Overview

Quantity:	50 µL
Target:	ALAD
Binding Specificity:	AA 241-338
Reactivity:	Human
Host:	Mouse
Clonality:	Polyclonal
Conjugate:	This ALAD antibody is un-conjugated
Application:	Western Blotting (WB), ELISA

Product Details

Purpose:	Mouse polyclonal antibody raised against a partial recombinant ALAD.
Immunogen:	ALAD (NP_000022, 241 a.a. ~ 338 a.a) partial recombinant protein with GST tag.
Sequence:	GLALRAVDRD VREGADMLMV KPGMPYLDIV REVKDKHPDL PLAVYHVSGE FAMLWHGAQA GAFDLKAAVL EAMTAFRRAG ADIIITYYTP QLLQWLKE
Cross-Reactivity:	Human
Characteristics:	Antibody Reactive Against Recombinant Protein.

Target Details

Target:	ALAD
Alternative Name:	ALAD (ALAD Products)

Target Details

Background:	Full Gene Name: aminolevulinate, delta-, dehydratase Synonyms: ALADH,MGC5057,PBGS
Gene ID:	210
NCBI Accession:	NM_000031

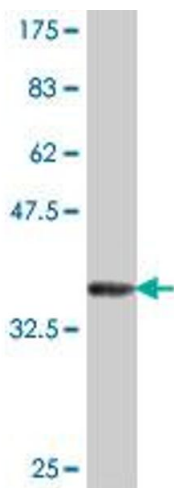
Application Details

Application Notes:	Optimal working dilution should be determined by the investigator.
Restrictions:	For Research Use only

Handling

Format:	Liquid
Buffer:	50 % glycerol
Handling Advice:	Aliquot to avoid repeated freezing and thawing.
Storage:	-20 °C
Storage Comment:	Store at -20°C or lower. Aliquot to avoid repeated freezing and thawing.

Images



Western Blotting

Image 1. Western Blot detection against Immunogen (36.89 KDa) .