



[Go to Product page](#)

Datasheet for ABIN559847

anti-ALDH3B2 antibody (AA 1-385)

1 Image

1 Publication

Overview

Quantity:	100 µg
Target:	ALDH3B2
Binding Specificity:	AA 1-385
Reactivity:	Human
Host:	Mouse
Clonality:	Monoclonal
Conjugate:	This ALDH3B2 antibody is un-conjugated
Application:	ELISA

Product Details

Purpose:	Mouse monoclonal antibody raised against a full length recombinant ALDH3B2.
Immunogen:	ALDH3B2 (AAH07685, 1 a.a. ~ 385 a.a) full-length recombinant protein with GST tag. MW of the GST tag alone is 26 KDa.
Sequence:	MKDEPRSTNL FMKLDVFIW KEPFGLVLII APWNYPLNLT LVLLVGALAA GSCVVLKPSE ISQGTEKVLV EVLPQYLDQS CFAVVLGGPQ ETGQLLEHKL DYIFFTGSPR VGKIVMTAAT KHLTPVTLEL GGKNPCYVDD NCDPQTVANR VAWFCYFNAG QTCVAPDYVL CSPEMQERLL PALQSTITRF YGDDPQSSPN LGRIINQKQF QRLRALLGCG RVAIGGQSNE SDRYIAPTVL VDVQETEPVM QEEIFGPILP IVNVQSVDEA IKFINWQEKP LALYAFSNSS QVVNQMLERT SSGSFGGNEG FTYISLLSVP FGGVGHSGMG RYHGKFTFDT FSHHRTCLLA PSGLEKLKEI HYPPYTDWNQ QLLRWGMGSQ SCTL
Clone:	3E6

Product Details

Isotype:	IgG1
Cross-Reactivity:	Human
Characteristics:	Antibody Reactive Against Recombinant Protein.

Target Details

Target:	ALDH3B2
Alternative Name:	ALDH3B2 (ALDH3B2 Products)
Background:	Full Gene Name: aldehyde dehydrogenase 3 family, member B2 Synonyms: ALDH8
Gene ID:	222

Application Details

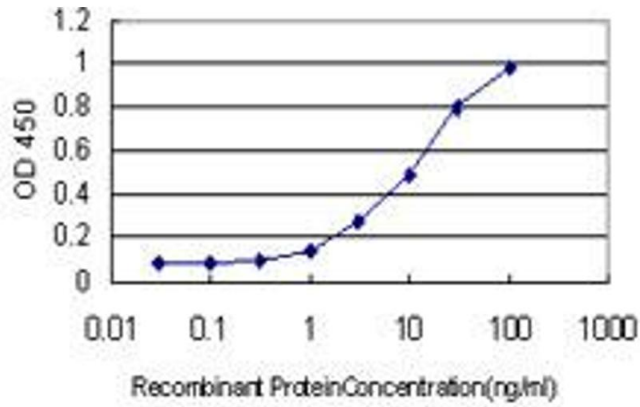
Application Notes:	Optimal working dilution should be determined by the investigator.
Restrictions:	For Research Use only

Handling

Buffer:	In 1x PBS, pH 7.4
Handling Advice:	Aliquot to avoid repeated freezing and thawing.
Storage:	-20 °C
Storage Comment:	Store at -20°C or lower. Aliquot to avoid repeated freezing and thawing.

Publications

Product cited in:	Klee, Finlay, McDonald, Attewell, Hebrink, Dyer, Love, Vasmatzis, Li, Beechem, Klee: "Bioinformatics methods for prioritizing serum biomarker candidates." in: Clinical chemistry , Vol. 52, Issue 11, pp. 2162-4, (2007) (PubMed).
-------------------	--------------------------------------------------------------------------------------------------------------------------------------------------------------------------------------------------------------------------------------------------------------



ELISA

Image 1. Detection limit for recombinant GST tagged ALDH3B2 is approximately 0.3ng/ml as a capture antibody.