



[Go to Product page](#)

Datasheet for ABIN559856  
**anti-ANXA8L2 antibody (AA 228-326)**

1 Image

Overview

Quantity:	50 µL
Target:	ANXA8L2
Binding Specificity:	AA 228-326
Reactivity:	Human
Host:	Mouse
Clonality:	Polyclonal
Conjugate:	This ANXA8L2 antibody is un-conjugated
Application:	Western Blotting (WB), ELISA

Product Details

Purpose:	Mouse polyclonal antibody raised against a partial recombinant ANXA8.
Immunogen:	ANXA8 (NP_001621, 228 a.a. ~ 326 a.a) partial recombinant protein with GST tag.
Sequence:	IEDSIKSETH GSLEEAMLTV VKCTQNLHSY FAERLYYAMK GAGTRDGTLI RNIVSRSEID LNLIKCHFCK MYGKTLSSMI MEDTSGDYKN ALLSLVGSD
Cross-Reactivity:	Human
Characteristics:	Antibody Reactive Against Recombinant Protein.

Target Details

Target:	ANXA8L2
Alternative Name:	ANXA8L2 ( <a href="#">ANXA8L2 Products</a> )

## Target Details

Background:	Full Gene Name: annexin A8-like 2 Synonyms: ANXA8,FLJ32754,FLJ54151,bA145E20.2
Gene ID:	244
NCBI Accession:	<a href="#">NM_001630</a>

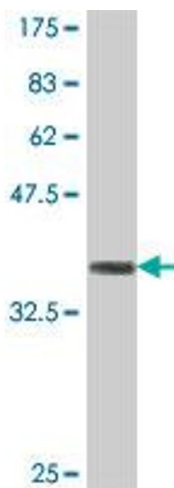
## Application Details

Application Notes:	Optimal working dilution should be determined by the investigator.
Restrictions:	For Research Use only

## Handling

Format:	Liquid
Buffer:	50 % glycerol
Handling Advice:	Aliquot to avoid repeated freezing and thawing.
Storage:	-20 °C
Storage Comment:	Store at -20°C or lower. Aliquot to avoid repeated freezing and thawing.

## Images



### Western Blotting

**Image 1.** Western Blot detection against Immunogen (37 KDa) .