



[Go to Product page](#)

Datasheet for ABIN559858  
**anti-ALPL antibody (AA 91-200)**

4 Images

Overview

Quantity:	100 µg
Target:	ALPL
Binding Specificity:	AA 91-200
Reactivity:	Human
Host:	Mouse
Clonality:	Monoclonal
Conjugate:	This ALPL antibody is un-conjugated
Application:	Western Blotting (WB), ELISA, RNA Interference (RNAi)

Product Details

Purpose:	Mouse monoclonal antibody raised against a partial recombinant ALPL.
Immunogen:	ALPL (AAH21289.3, 29 a.a. ~ 138 a.a) partial recombinant protein with GST tag. MW of the GST tag alone is 26 KDa.
Sequence:	WRDQAQETLK YALELQKLNT NVAKNVIMFL GDGMGVSTVT AARILKGQLH HNPGEETRLE MDKFPFVALS KTYNTNAQVP DSAGTATAYL CGVKANEGTV GVSAATERSR
Clone:	4H1
Isotype:	IgG2b
Cross-Reactivity:	Human
Characteristics:	Antibody Reactive Against Recombinant Protein.

## Target Details

Target:	ALPL
Alternative Name:	ALPL ( <a href="#">ALPL Products</a> )
Background:	Full Gene Name: alkaline phosphatase, liver/bone/kidney Synonyms: AP-TNAP,FLJ40094,FLJ93059,HOPS,MGC161443,MGC167935,TNAP,TNSALP
Gene ID:	249

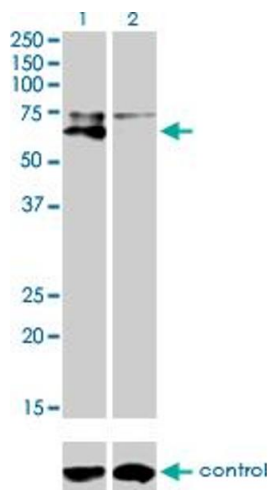
## Application Details

Application Notes:	Optimal working dilution should be determined by the investigator.
Restrictions:	For Research Use only

## Handling

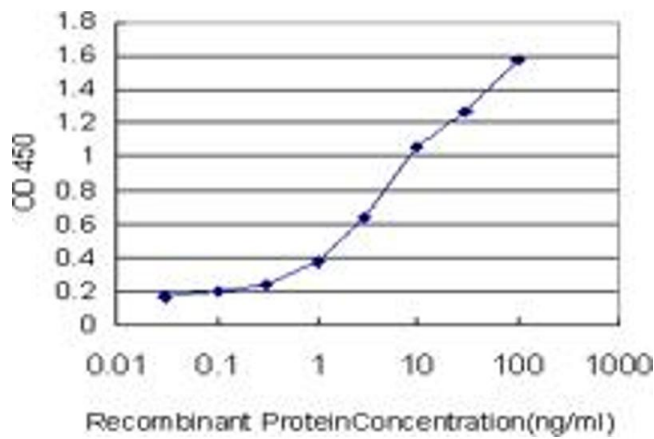
Buffer:	In 1x PBS, pH 7.4
Handling Advice:	Aliquot to avoid repeated freezing and thawing.
Storage:	-20 °C
Storage Comment:	Store at -20°C or lower. Aliquot to avoid repeated freezing and thawing.

## Images



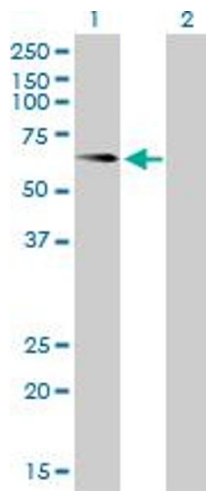
### Western Blotting

**Image 1.** Western blot analysis of ALPL over-expressed 293 cell line, cotransfected with ALPL Validated Chimera RNAi (Lane 2) or non-transfected control (Lane 1). Blot probed with ALPL monoclonal antibody (M01), clone 4H1. GAPDH ( 36.1 kDa ) used as specificity and loading control.



### ELISA

**Image 2.** Detection limit for recombinant GST tagged ALPL is approximately 0.1 ng/ml as a capture antibody.



### Western Blotting

**Image 3.** Western Blot analysis of ALPL expression in transfected 293T cell line by ALPL monoclonal antibody (M01), clone 4H1.

Lane 1: ALPL transfected lysate(57.3 KDa).

Lane 2: Non-transfected lysate.

Please check the [product details page](#) for more images. Overall 4 images are available for ABIN559858.