

Datasheet for ABIN559871  
**anti-SLC25A6 antibody (AA 135-209)**[Go to Product page](#)

## 1 Image

## Overview

Quantity:	50 µL
Target:	SLC25A6
Binding Specificity:	AA 135-209
Reactivity:	Human
Host:	Mouse
Clonality:	Polyclonal
Conjugate:	This SLC25A6 antibody is un-conjugated
Application:	Western Blotting (WB), ELISA

## Product Details

Purpose:	Mouse polyclonal antibody raised against a partial recombinant SLC25A6.
Immunogen:	SLC25A6 (NP_001627, 135 a.a. ~ 209 a.a) partial recombinant protein with GST tag.
Sequence:	DFARTRLAAD VGKSGTEREF RGLGDCLVKI TKSDGIRGLY QGFSVSVQGI IYRAAYFGV YDTAKGMLPD PKNTH
Cross-Reactivity:	Human
Characteristics:	Antibody Reactive Against Recombinant Protein.

## Target Details

Target:	SLC25A6
Alternative Name:	SLC25A6 ( <a href="#">SLC25A6 Products</a> )

## Target Details

Background:	Full Gene Name: solute carrier family 25 (mitochondrial carrier, adenine nucleotide translocator), member 6 Synonyms: AAC3,ANT3,ANT3Y,MGC17525
Gene ID:	293
NCBI Accession:	<a href="#">NM_001636</a>

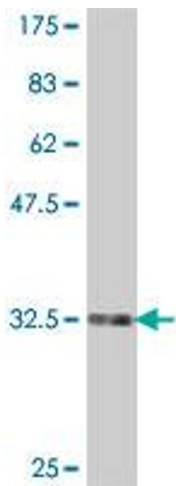
## Application Details

Application Notes:	Optimal working dilution should be determined by the investigator.
Restrictions:	For Research Use only

## Handling

Format:	Liquid
Buffer:	50 % glycerol
Handling Advice:	Aliquot to avoid repeated freezing and thawing.
Storage:	-20 °C
Storage Comment:	Store at -20°C or lower. Aliquot to avoid repeated freezing and thawing.

## Images



### Western Blotting

**Image 1.** Western Blot detection against Immunogen (34.36 KDa) .