

Datasheet for ABIN559876  
**anti-Annexin A3 antibody (AA 1-323)**



[Go to Product page](#)

4 Images

2 Publications

Overview

Quantity:	100 µg
Target:	Annexin A3 (ANXA3)
Binding Specificity:	AA 1-323
Reactivity:	Human
Host:	Mouse
Clonality:	Monoclonal
Conjugate:	This Annexin A3 antibody is un-conjugated
Application:	Western Blotting (WB), ELISA, RNA Interference (RNAi)

Product Details

Purpose:	Mouse monoclonal antibody raised against a full length recombinant ANXA3.
Immunogen:	ANXA3 (AAH00871, 1 a.a. ~ 323 a.a) full-length recombinant protein with GST tag. MW of the GST tag alone is 26 KDa.
Sequence:	<p>MASIWVGHARG TVRDYPDFSP SVDAEAIQKA IRGIGTDEKM LISILTERSN AQRQLIVKEY            QAAYGKELKD DLKGDLSGHF EHLMVALVTP PAVFDAKQLK KSMKGAGTNE DALIEILTTR            TSRQMKDISQ AYYTVYKSL GDDISSETSG DFRKALLTLA DGRRDESLKV DEHLAKQDAQ            ILYKAGENRW GTDEDKFTEI LCLRSFPQLK LTFDEYRNIS QKDIVDSIKG ELSGHFEDLL            LAIVNCVRNT PAFLAERLHR ALKGIGTDEF TLNRIMVSRS EIDLLDIRTE FKKHYGYSLY            SAIKSDTSGD YEITLLKICG GDD</p>
Clone:	4F1
Isotype:	IgG1

## Product Details

---

Cross-Reactivity:	Human
Characteristics:	Antibody Reactive Against Recombinant Protein.

## Target Details

---

Target:	Annexin A3 (ANXA3)
Alternative Name:	ANXA3 ( <a href="#">ANXA3 Products</a> )
Background:	Full Gene Name: annexin A3 Synonyms: ANX3
Gene ID:	306

## Application Details

---

Application Notes:	Optimal working dilution should be determined by the investigator.
Restrictions:	For Research Use only

## Handling

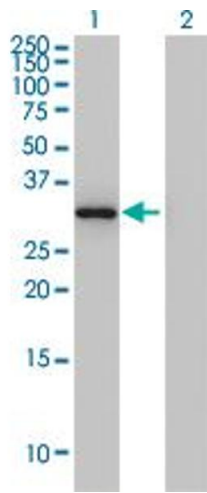
---

Buffer:	In 1x PBS, pH 7.4
Handling Advice:	Aliquot to avoid repeated freezing and thawing.
Storage:	-20 °C
Storage Comment:	Store at -20°C or lower. Aliquot to avoid repeated freezing and thawing.

## Publications

---

Product cited in:	<p>Watanabe, Ito, Sato, Hosono, Niimi, Ariga, Seki: "Annexin A3 as a negative regulator of adipocyte differentiation." in: <b>Journal of biochemistry</b>, Vol. 152, Issue 4, pp. 355-63, (2012) (<a href="#">PubMed</a>).</p> <p>Cao, Ye, Zhang, Zhu, Wang, Yao: "A multiplex model of combining gene-based, protein-based, and metabolite-based with positive and negative markers in urine for the early diagnosis of prostate cancer." in: <b>The Prostate</b>, Vol. 71, Issue 7, pp. 700-10, (2011) (<a href="#">PubMed</a>).</p>
-------------------	--

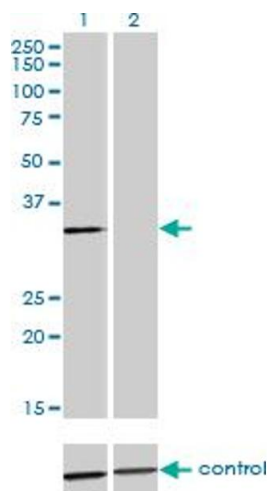


### Western Blotting

**Image 1.** Western Blot analysis of ANXA3 expression in transfected 293T cell line by ANXA3 monoclonal antibody (M12), clone 4F1.

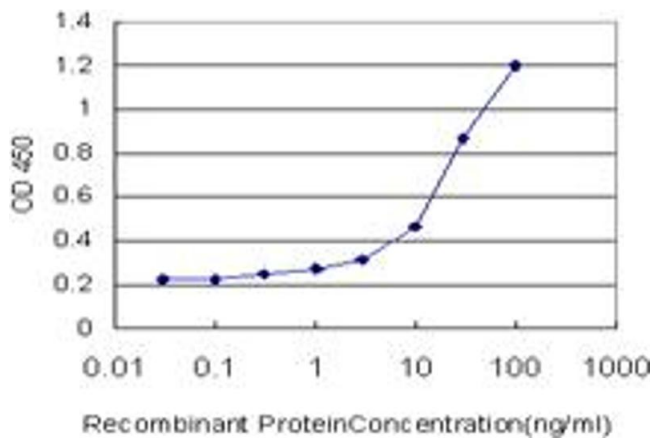
Lane 1: ANXA3 transfected lysate(37.145 KDa).

Lane 2: Non-transfected lysate.



### Western Blotting

**Image 2.** Western blot analysis of ANXA3 over-expressed 293 cell line, cotransfected with ANXA3 Validated Chimera RNAi (Lane 2) or non-transfected control (Lane 1). Blot probed with ANXA3 monoclonal antibody (M12), clone 4F1. GAPDH ( 36.1 kDa ) used as specificity and loading control.



### ELISA

**Image 3.** Detection limit for recombinant GST tagged ANXA3 is approximately 1ng/ml as a capture antibody.

Please check the [product details page](#) for more images. Overall 4 images are available for ABIN559876.