

Datasheet for ABIN559905  
**anti-APP antibody (AA 19-305)**



[Go to Product page](#)

3 Images

## Overview

Quantity:	100 µg
Target:	APP
Binding Specificity:	AA 19-305
Reactivity:	Human
Host:	Mouse
Clonality:	Monoclonal
Conjugate:	This APP antibody is un-conjugated
Application:	Western Blotting (WB), ELISA, Proximity Ligation Assay (PLA)

## Product Details

Purpose:	Mouse monoclonal antibody raised against a full length recombinant APP.
Immunogen:	APP (AAH04369.1, 19 a.a. ~ 305 a.a) full-length recombinant protein with GST tag. MW of the GST tag alone is 26 KDa.
Sequence:	EVPTDGNAGL LAEPQIAMFC GRLNMHMNVQ NGKWSDPSG TKTCIDTKEG ILQYCQEVYP ELQITNVEA NQPVTIQNWC KRGRKQCKTH PHFVIPYRCL VGEFVSDALL VPKCKFLHQ ERMDVCETHL HWHTVAKETC SEKSTNLHDY GMLLPCGIDK FRGVEFVCCP LAESDNVDS ADAEEDSDV WWGGADTDYA DGSEDKVVEV AEEEEVAEVE EEEADDDDED EDGDEVEEEA EEPYEEATER TTSIATTTTT TTESVEEVVR EKWYKEVHSG QARWLML
Clone:	2C12
Isotype:	IgG1
Cross-Reactivity:	Human, Rat

## Product Details

---

Characteristics: Antibody Reactive Against Recombinant Protein.

## Target Details

---

Target: APP

Alternative Name: APP ([APP Products](#))

Background: Full Gene Name: amyloid beta (A4) precursor protein  
Synonyms: AAA,ABETA,ABPP,AD1,APPI,CTFgamma,CVAP,PN2

Gene ID: 351

Pathways: [Caspase Cascade in Apoptosis](#), [EGFR Signaling Pathway](#), [Transition Metal Ion Homeostasis](#),  
[Skeletal Muscle Fiber Development](#), [Toll-Like Receptors Cascades](#), [Feeding Behaviour](#)

## Application Details

---

Application Notes: Optimal working dilution should be determined by the investigator.

Restrictions: For Research Use only

## Handling

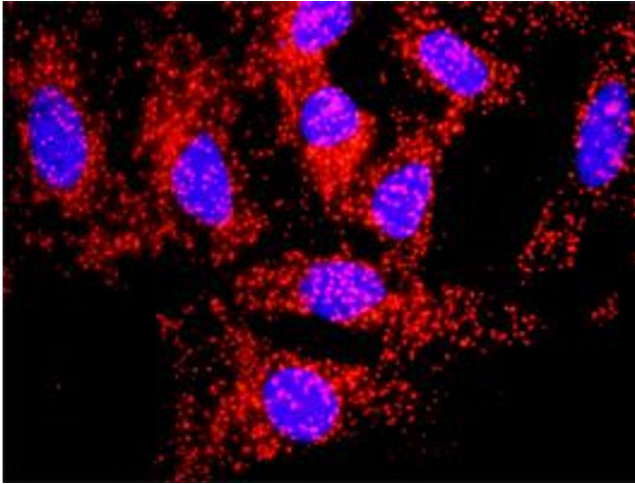
---

Buffer: In 1x PBS, pH 7.4

Handling Advice: Aliquot to avoid repeated freezing and thawing.

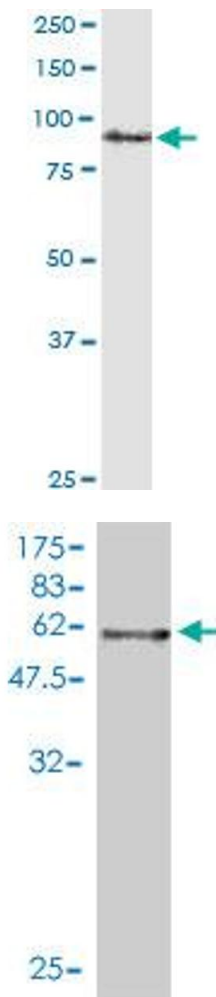
Storage: -20 °C

Storage Comment: Store at -20°C or lower. Aliquot to avoid repeated freezing and thawing.



### Proximity Ligation Assay

**Image 1.** Proximity Ligation Analysis of protein-protein interactions between TGFB1 and APP. HeLa cells were stained with anti-TGFB1 rabbit purified polyclonal 1:1200 and anti-APP mouse monoclonal antibody 1:50. Each red dot represents the detection of protein-protein interaction complex, and nuclei were counterstained with DAPI (blue).



### Western Blotting

**Image 2.** APP monoclonal antibody (M01), clone 2C12. Western Blot analysis of APP expression in rat brain.

### Western Blotting

**Image 3.** Western Blot detection against Immunogen (57.31 KDa) .