

Datasheet for ABIN559910
anti-FASL antibody (AA 1-281)



[Go to Product page](#)

3 Images

Overview

Quantity:	100 µg
Target:	FASL
Binding Specificity:	AA 1-281
Reactivity:	Human
Host:	Mouse
Clonality:	Monoclonal
Conjugate:	This FASL antibody is un-conjugated
Application:	Western Blotting (WB), ELISA, Immunofluorescence (IF), Proximity Ligation Assay (PLA)

Product Details

Purpose:	Mouse monoclonal antibody raised against a full length recombinant FASLG.
Immunogen:	FASLG (AAH17502.1, 1 a.a. ~ 281 a.a) full-length recombinant protein with GST tag. MW of the GST tag alone is 26 KDa.
Sequence:	MQQPFNYYPY QIYWVDSSAS SPWAPP GTVL PCPTSVPRRP GQRRPPPPPP PPPLPPPPPP PPLPPLPLPP LKKRGNHSTG LCLLMFFMV LVALVGLGLG MFQLFHLQKE LAELRESTSQ MHTASSLEKQ IGHPSPPEK KELRKVAHLT GKSNSRSMPL EWEDTYGIVL LSGVKYKKGK LVINETGLYF VYSKVYFRGQ SCNNLPLSHK VYMRNSKYPQ DLVMMEGKMM SYCTTGQMWA RSSYLGA VFN LTSADHLYVN VSELSLVNFE ESQTFGLYK L
Clone:	2G9-G8
Isotype:	IgG2a
Cross-Reactivity:	Human

Product Details

Characteristics: Antibody Reactive Against Recombinant Protein.

Target Details

Target: FASL

Alternative Name: FASLG ([FASL Products](#))

Background: Full Gene Name: Fas ligand (TNF superfamily, member 6)
Synonyms: APT1LG1,CD178,CD95L,FASL,TNFSF6

Gene ID: 356

Pathways: [Apoptosis](#), [EGFR Signaling Pathway](#), [Production of Molecular Mediator of Immune Response](#),
[Positive Regulation of Endopeptidase Activity](#)

Application Details

Application Notes: Optimal working dilution should be determined by the investigator.

Restrictions: For Research Use only

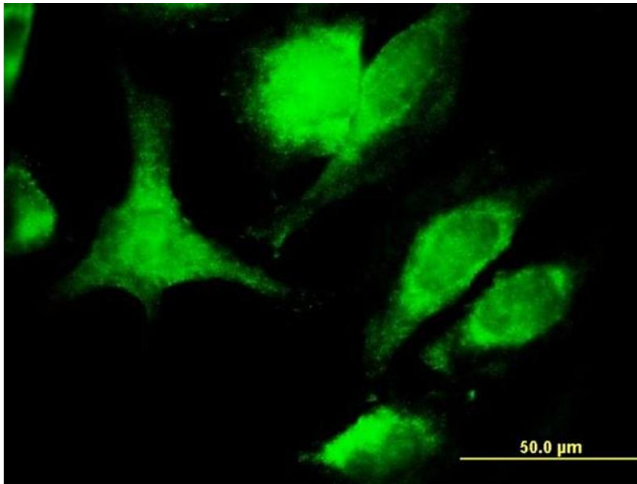
Handling

Buffer: In 1x PBS, pH 7.4

Handling Advice: Aliquot to avoid repeated freezing and thawing.

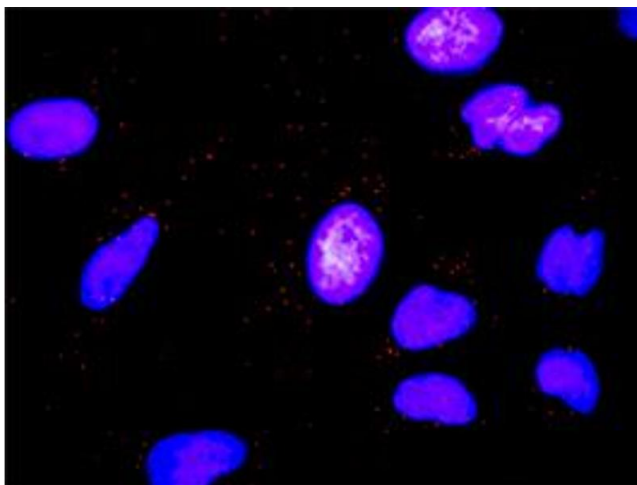
Storage: -20 °C

Storage Comment: Store at -20°C or lower. Aliquot to avoid repeated freezing and thawing.



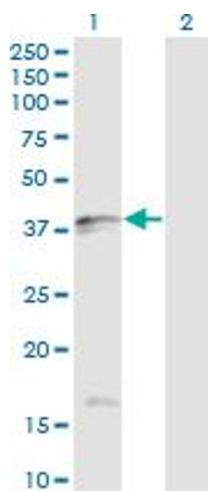
Immunofluorescence

Image 1. Immunofluorescence of monoclonal antibody to TNFSF6 on HeLa cell. [antibody concentration 10 ug/ml]



Proximity Ligation Assay

Image 2. Proximity Ligation Analysis of protein-protein interactions between MMP7 and FASLG. HeLa cells were stained with anti-MMP7 rabbit purified polyclonal 1:1200 and anti-FASLG mouse monoclonal antibody 1:50. Each red dot represents the detection of protein-protein interaction complex, and nuclei were counterstained with DAPI (blue).



Western Blotting

Image 3. Western Blot analysis of FASLG expression in transfected 293T cell line by FASLG monoclonal antibody (M02), clone 2G9-G8.

Lane 1: FASLG transfected lysate (Predicted MW: 31.5 KDa).

Lane 2: Non-transfected lysate.