



[Go to Product page](#)

Datasheet for ABIN559941  
**anti-ARHGDI A antibody (AA 1-204)**

1 Image

Overview

Quantity:	50 µL
Target:	ARHGDI A
Binding Specificity:	AA 1-204
Reactivity:	Human
Host:	Mouse
Clonality:	Polyclonal
Conjugate:	This ARHGDI A antibody is un-conjugated
Application:	Western Blotting (WB), ELISA

Product Details

Purpose:	Mouse polyclonal antibody raised against a full-length recombinant ARHGDI A.
Immunogen:	ARHGDI A (AAH16031, 1 a.a. ~ 204 a.a) full-length recombinant protein with GST tag.
Sequence:	MAEQEPTAEQ LAQIAAENEE DEHSVNYKPP AQKSIQEIQE LDKDDESLRK YKEALLGRVA VSADPNVNV VVTGLTLVCS SAPGPLELDL TGDLESFKKQ SFVLKEGVEY RIKISFRVNR EIVSGMKYIQ HTYRKGVKID KTDYMGVSYG PRAEEYEFLT PVEEAPKGML ARGSYSIKSR FTDDDKTDHL SWEWNLTIKK DWKD
Cross-Reactivity:	Human
Characteristics:	Antibody Reactive Against Recombinant Protein.

Target Details

Target:	ARHGDI A
---------	----------

## Target Details

Alternative Name:	ARHGDI2 (ARHGDI2 Products)
Background:	Full Gene Name: Rho GDP dissociation inhibitor (GDI) alpha Synonyms: GDIA1,MGC117248,RHOGDI,RHOGDI-1
Gene ID:	396
Pathways:	<a href="#">Neurotrophin Signaling Pathway</a>

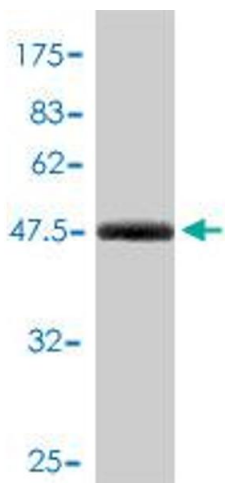
## Application Details

Application Notes:	Optimal working dilution should be determined by the investigator.
Restrictions:	For Research Use only

## Handling

Format:	Liquid
Buffer:	50 % glycerol
Handling Advice:	Aliquot to avoid repeated freezing and thawing.
Storage:	-20 °C
Storage Comment:	Store at -20°C or lower. Aliquot to avoid repeated freezing and thawing.

## Images



### Western Blotting

**Image 1.** Western Blot detection against Immunogen (48.55 KDa) .