



[Go to Product page](#)

Datasheet for ABIN559950
anti-ARL1 antibody (AA 72-181)

1 Image

Overview

Quantity:	50 µL
Target:	ARL1
Binding Specificity:	AA 72-181
Reactivity:	Human
Host:	Mouse
Clonality:	Polyclonal
Conjugate:	This ARL1 antibody is un-conjugated
Application:	ELISA

Product Details

Purpose:	Mouse polyclonal antibody raised against a partial recombinant ARL1.
Immunogen:	ARL1 (NP_001168, 72 a.a. ~ 181 a.a) partial recombinant protein with GST tag.
Sequence:	TSIRPYWRCY YSNTDAVIYV VDSCDRDRIG ISKSELVAML EEEELRKAIL VVFANKQDME QAMTSSEMAN SLGLPALKDR KWQIFKTSAT KGTGLDEAME WLVELTKSRQ
Cross-Reactivity:	Human
Characteristics:	Antibody Reactive Against Recombinant Protein.

Target Details

Target:	ARL1
Alternative Name:	ARL1 (ARL1 Products)

Target Details

Background:	Full Gene Name: ADP-ribosylation factor-like 1 Synonyms: ARFL1
Gene ID:	400
NCBI Accession:	NM_001177

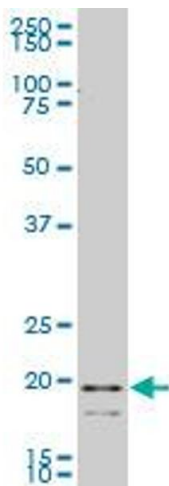
Application Details

Application Notes:	Optimal working dilution should be determined by the investigator.
Restrictions:	For Research Use only

Handling

Format:	Liquid
Buffer:	50 % glycerol
Handling Advice:	Aliquot to avoid repeated freezing and thawing.
Storage:	-20 °C
Storage Comment:	Store at -20°C or lower. Aliquot to avoid repeated freezing and thawing.

Images



Viral Entry Inhibition

Image 1. ARL1 polyclonal antibody (A01), Lot # EGC0060125QCS1 Western Blot analysis of ARL1 expression in HeLa S3 NE (Cat # L013V3).