



Datasheet for ABIN559955

## anti-Arylsulfatase B antibody (AA 166-265)



[Go to Product page](#)

### 1 Image

#### Overview

Quantity:	50 µL
Target:	Arylsulfatase B (ARSB)
Binding Specificity:	AA 166-265
Reactivity:	Human
Host:	Mouse
Clonality:	Polyclonal
Conjugate:	This Arylsulfatase B antibody is un-conjugated
Application:	Western Blotting (WB), ELISA

#### Product Details

Purpose:	Mouse polyclonal antibody raised against a partial recombinant ARSB.
Immunogen:	ARSB (NP_942002, 166 a.a. ~ 265 a.a) partial recombinant protein with GST tag.
Sequence:	FGYLLGSEDY YSHERCTLID ALNVTRCALD FRDGEEVATG YKNMYSTNIF TKRAIALITN HPPEKPLFLY LALQSVHEPL QVPEEYLKPY DFIQDKNRHH
Cross-Reactivity:	Human
Characteristics:	Antibody Reactive Against Recombinant Protein.

#### Target Details

Target:	Arylsulfatase B (ARSB)
Alternative Name:	ARSB ( <a href="#">ARSB Products</a> )

## Target Details

Background: Full Gene Name: arylsulfatase B  
Synonyms: ASB,G4S,MPS6

Gene ID: 411

NCBI Accession: [NM\\_198709](#)

Pathways: [Glycosaminoglycan Metabolic Process](#)

## Application Details

Application Notes: Optimal working dilution should be determined by the investigator.

Restrictions: For Research Use only

## Handling

Format: Liquid

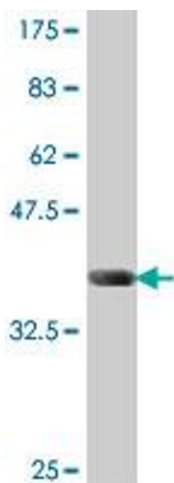
Buffer: 50 % glycerol

Handling Advice: Aliquot to avoid repeated freezing and thawing.

Storage: -20 °C

Storage Comment: Store at -20°C or lower. Aliquot to avoid repeated freezing and thawing.

## Images



### Western Blotting

**Image 1.** Western Blot detection against Immunogen (37.11 KDa) .